

Fasteners Assembly Instructions for COL-18

Applying for products:

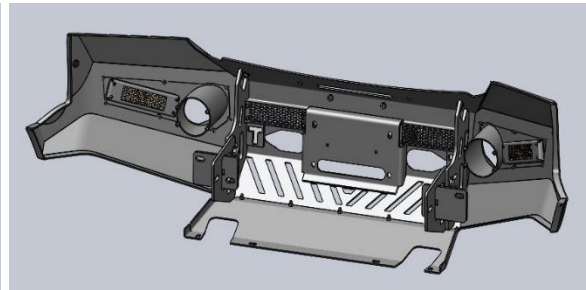
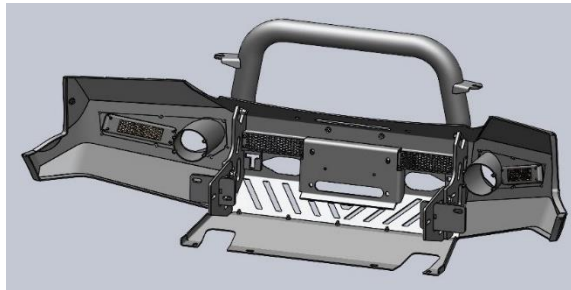
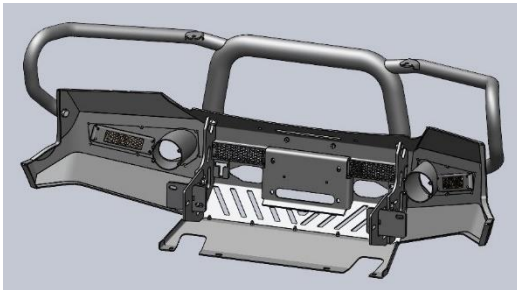
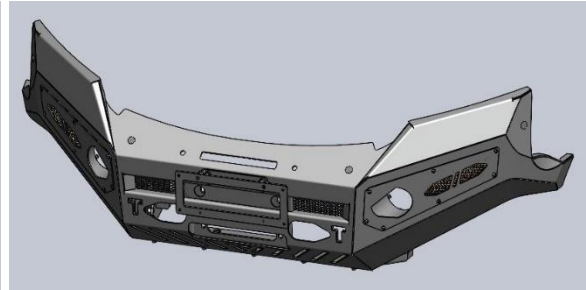
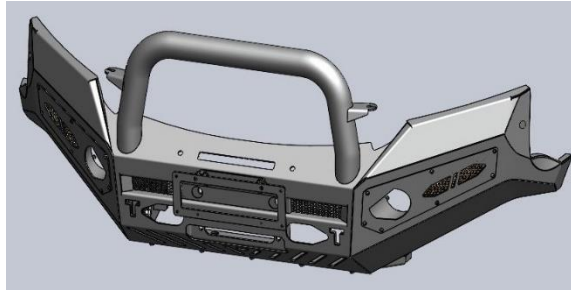
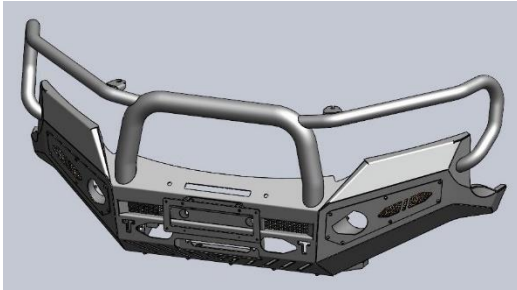
1135-COL-18-NH

1135-COL-18-SH

1135-COL-18-3H

Part number	Description	Qty/per set
AC01	Hex Head Bolt M16 x 30mmL x P2	4
AC02	Hex Head Bolt M12 x 40mmL x P1.25	6
AC03	Hex Head Bolt M8 x 25mmL x P1.25	9
AC04	M6 x 16mmL x P1 Steel Hex Socket (Allen Key) & Domed Head Bolt	22
AC05	M6 x 12mmL x P1 Steel Hex Socket (Allen Key) & Domed Head Bolt	8
AC06	M4 x 15mmL x P0.7 Hex Socket (Allen Key) & Domed Head Bolt	4
AC09	Nylock Nut M12 x 1.25	6
AC10	Nylock Nut M8 x 1.25	4
AC11	Nylock Nut M4 x 0.5	4
AC12	Steel Spring Washer M8	7
AC13	Steel Spring Washer M6	16
AC14	Steel Nord Lock Washer M12 x 13mmID x 19mmOD x 2.2mmT	6
AC15	Steel Flat Washer M16 x 17mmID x 30mmOD x 2.5mmT	4
AC16	Steel Flat Washer M12 x 13mmID x 26mmOD x 2.2mmT	12
AC17	Steel Flat Washer M8 x 8.5mmID x 17mmOD x 1.5mmT	13
AC18	Steel Flat Washer M4 x 4.3mmID x 9mmOD x 0.8mmT	12
AC19	Steel Flat Washer M6 x 6.6mmID x 15mmOD x 2mmT	22
AC20	M4 x 15mmL x P0.7 Hex Socket (Allen Key) & Domed Head Bolt	8
AC30	Electric Cable Packed	1
AC31	Frog Lights (Pair) with Accessories	1
AC32	Indicator Lights (Pair)	1

GENERAL VIEW



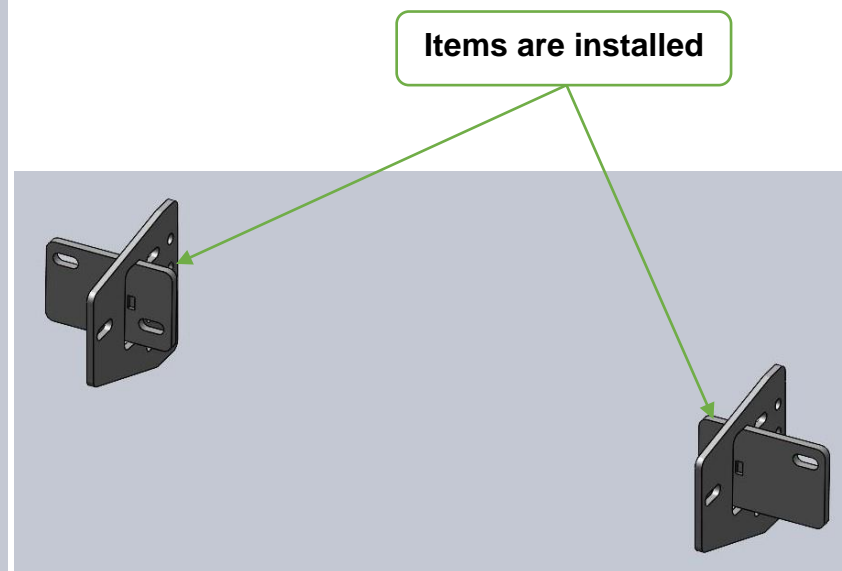
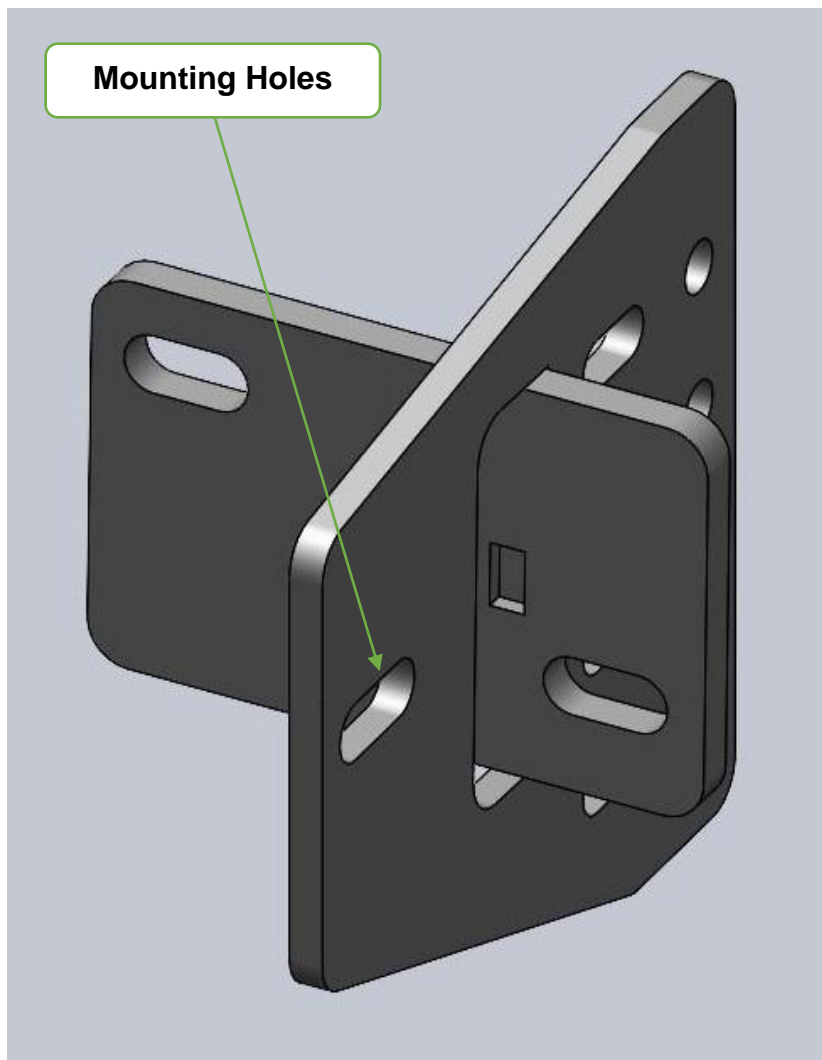
3 HOOP

SINGLE HOOP

NO HOOP

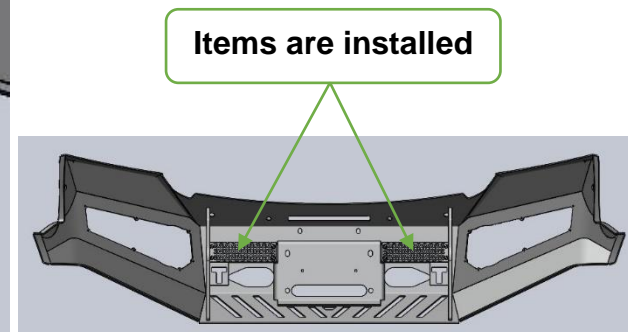
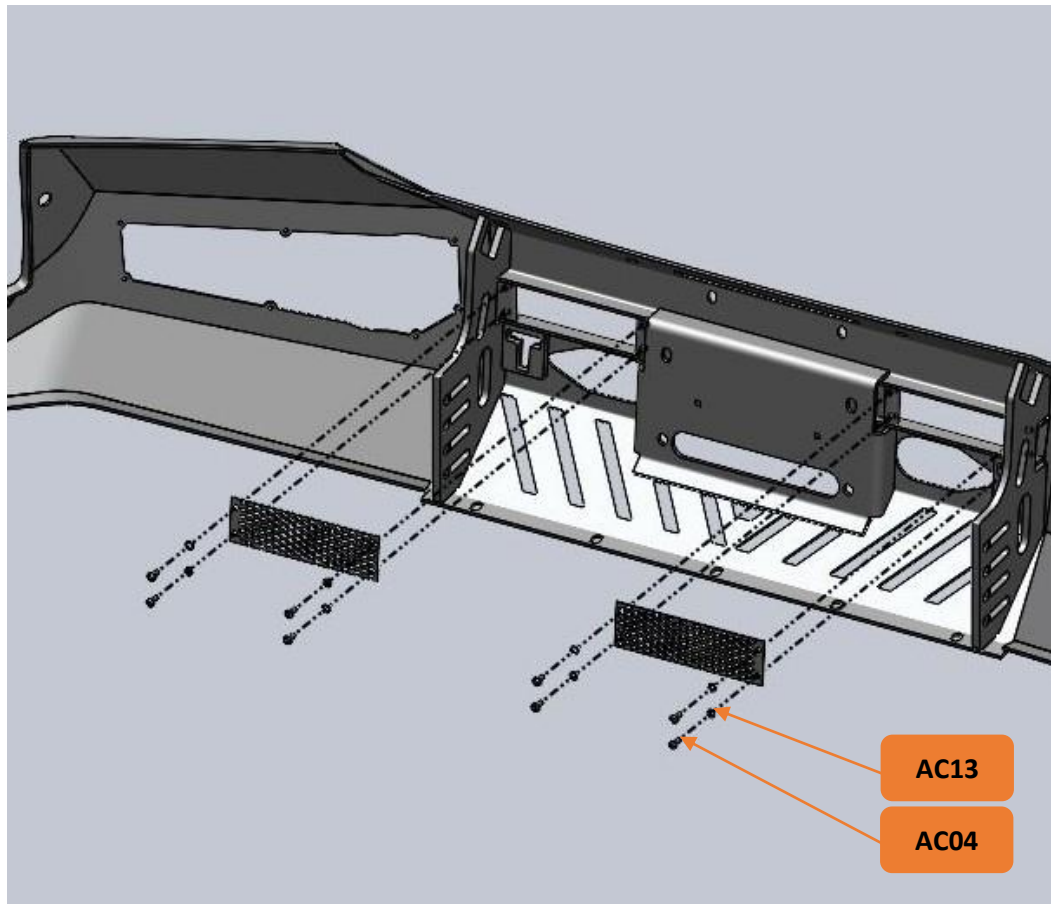
WI-015-R0

STEP 1: Install Brackets into the Car, bolted both sides with 2 positions.



WI-015-R0

STEP 2.1: Install Mesh into the Bull Bar Body, bolted both sides with 8 positions.



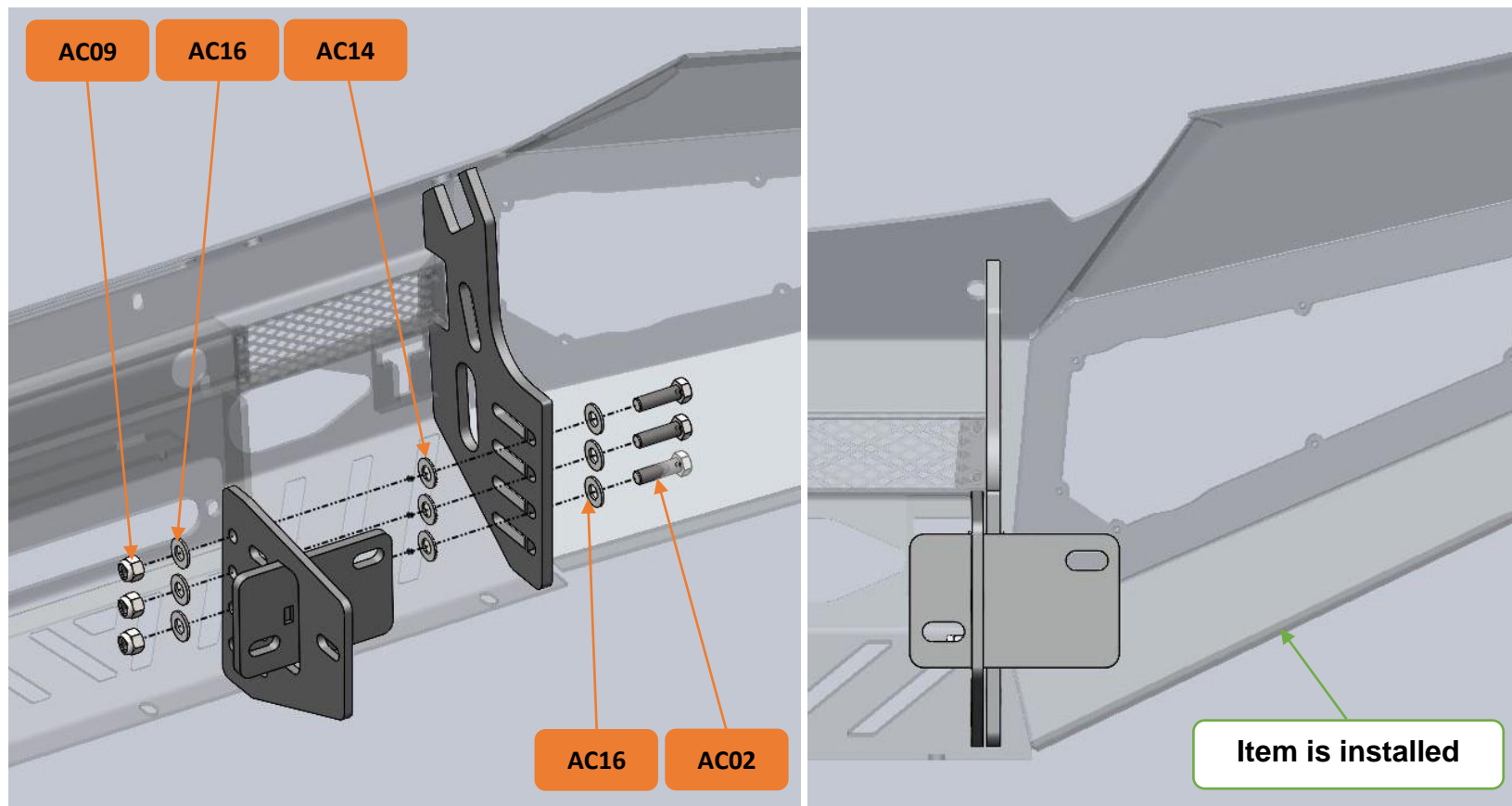
AC04 x 08 pcs : M6 x 16mmL x P1 Steel Hex Socket (Allen Key) & Domed Head Bolt

AC13 x 08 pcs : Steel Spring Washer M6

Bolt Tightening Torque: 10(Nm)

WI-015-R0

STEP 2.2: Install Bull Bar Body into the Car, bolted both sides with 6 positions.



AC02 x 06 pcs : Hex Head Bolt M12 x 40mmL x P1.25

AC09 x 06 pcs : Nylock Nut M12 x 1.25

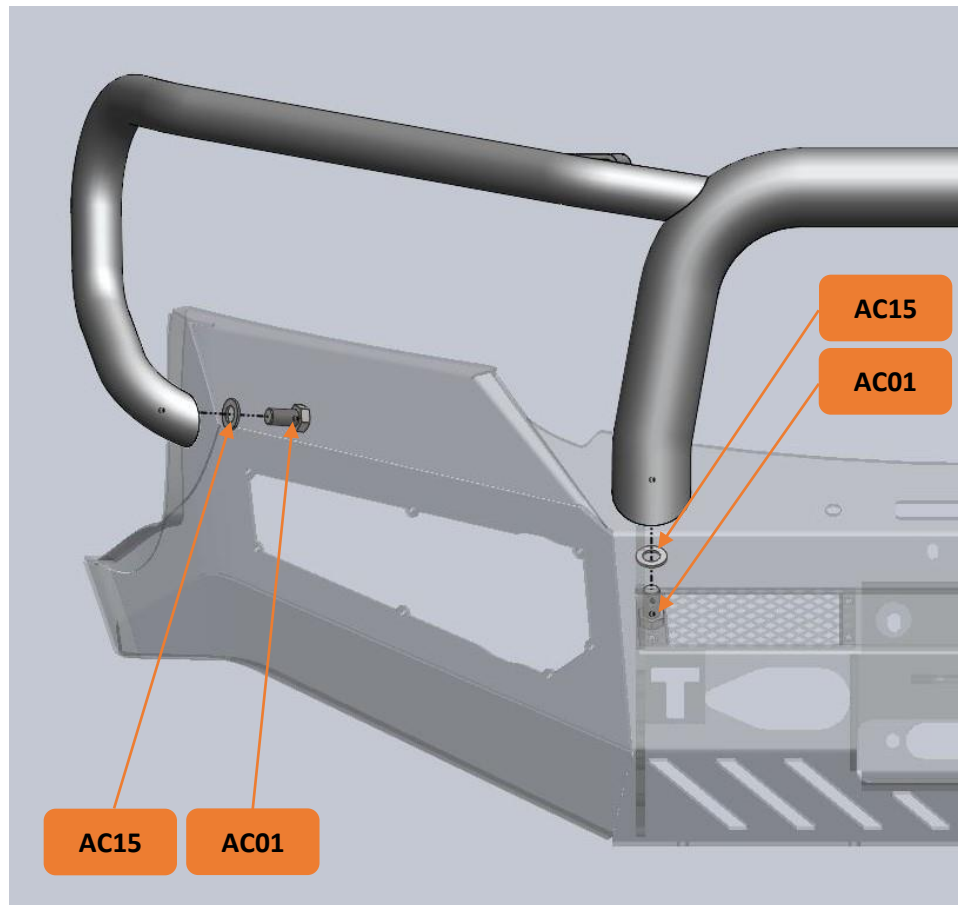
AC14 x 06 pcs : Steel Nord Lock Washer M12 x 13mmID x 19mmOD x 2.2mmT

AC16 x 12 pcs : Steel Flat Washer M12 x 13mmID x 26mmOD x 2.2mmT

Bolt Tightening Torque: 88(Nm)

WI-015-R0

STEP 3.1: Install 3 Hoop into the Car, bolted with 4 positions. **[Use for 3 Hoop only]**



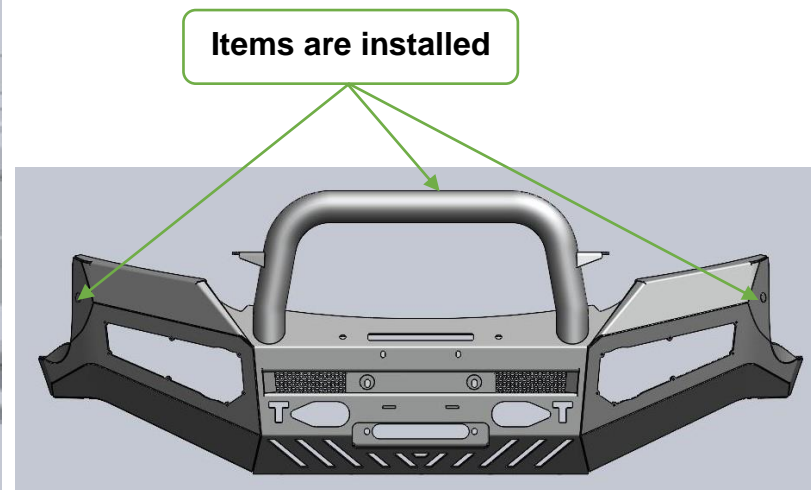
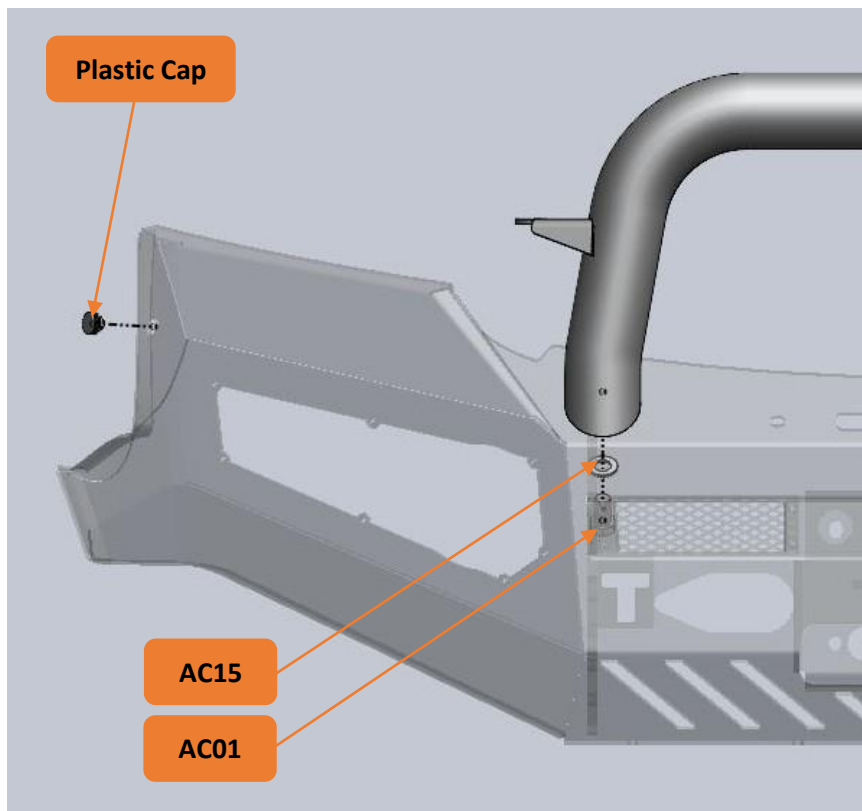
AC01 x 04 pcs : Hex Head Bolt M16 x 30mmL x P2

AC15 x 04 pcs : Steel Flat Washer M16 x 17mmID x 30mmOD x 2.5mmT

Bolt Tightening Torque: 88(Nm)

WI-015-R0

STEP 3.2: Install Single Hoop & Plastic Cap into the Car, bolted with 4 positions. **[Use for Single Hoop only]**



Plastic Cap x 02 pcs

Bolt Tightening Torque: 3(Nm)

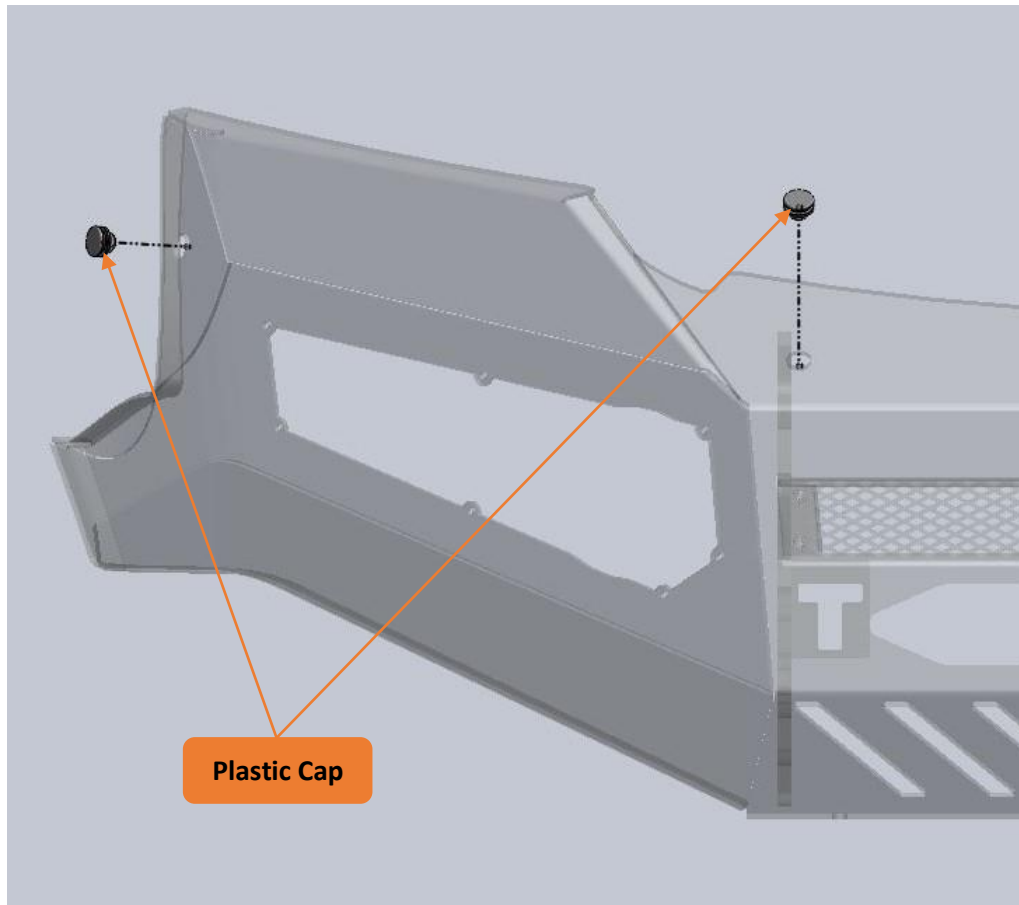
AC01 x 02 pcs : Hex Head Bolt M16 x 30mmL x P2

AC15 x 02 pcs : Steel Flat Washer M16 x 17mmID x 30mmOD x 2.5mmT

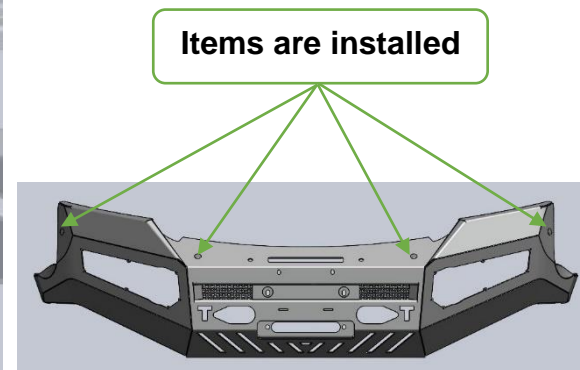
Bolt Tightening Torque: 88(Nm)

WI-015-R0

STEP 3.3: Install No Hoop & Plastic Cap into the Car, bolted with 4 positions. **[Use for No Hoop only]**



Plastic Cap



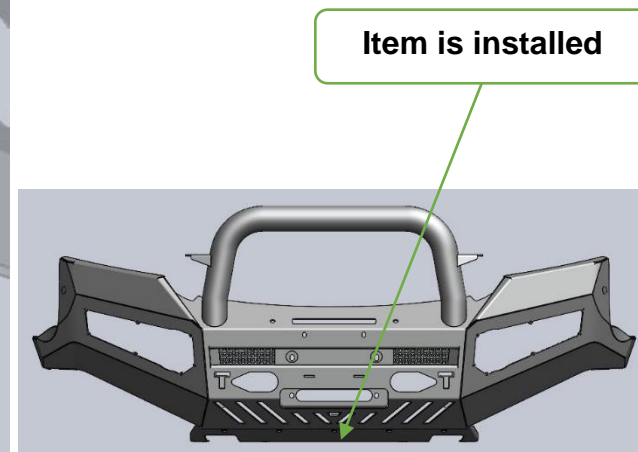
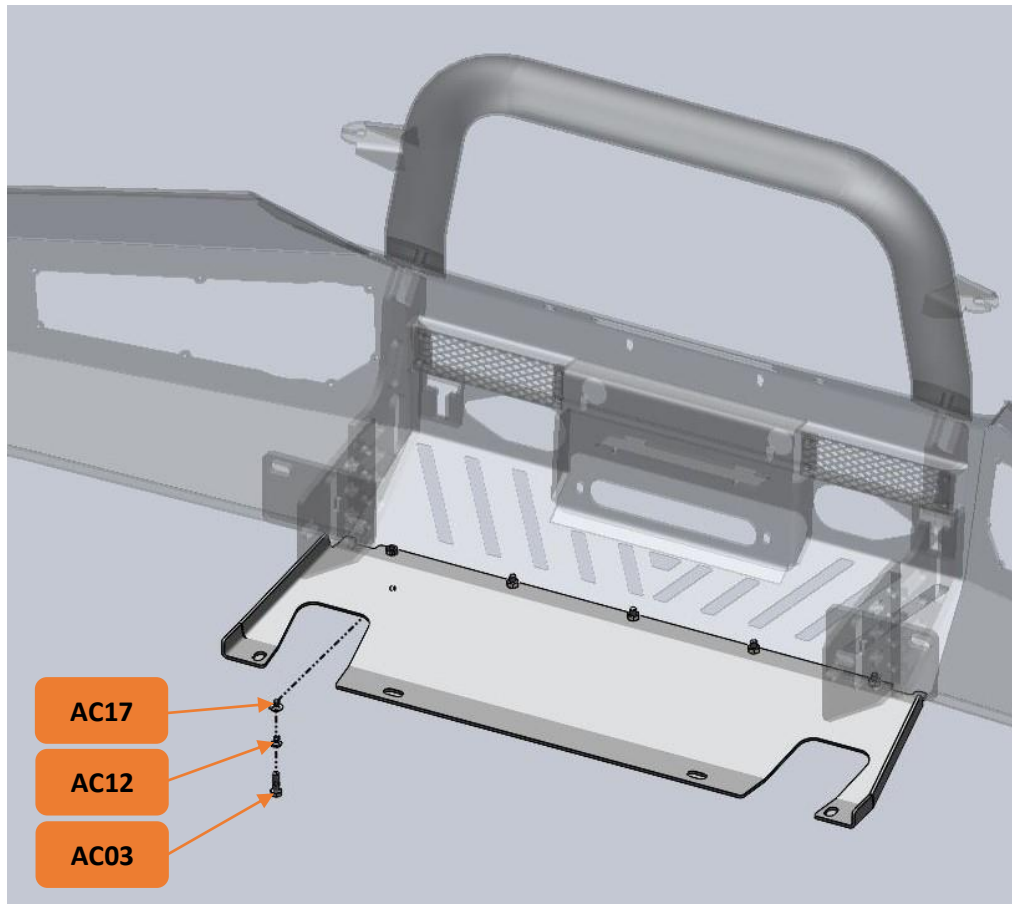
Items are installed

Plastic Cap x 04 pcs

Bolt Tightening Torque: 3(Nm)

WI-015-R0

STEP 4: Install Bottom Plate into the Car, bolted with 5 positions.



AC03 x 05 pcs : Hex Head Bolt M8 x 25mmL x P1.25

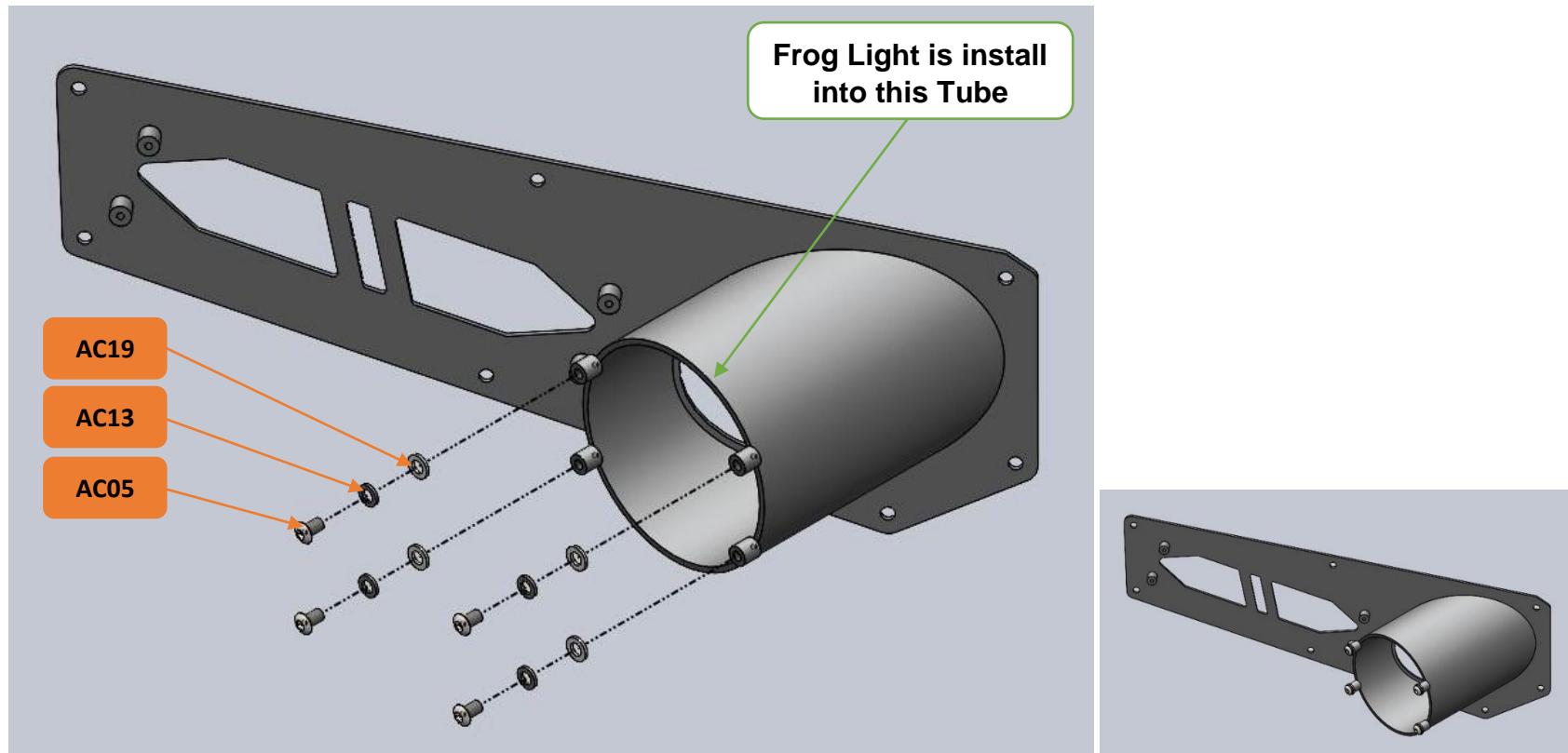
AC12 x 05 pcs : Steel Spring Washer M8

AC17 x 05 pcs : Steel Flat Washer M8 x 8.5mmID x 17mmOD x 1.5mmT

Bolt Tightening Torque: 24(Nm)

WI-015-R0

STEP 5.1: Install Frog Light into Light Panel LH & RH, bolted both side with 8 positions.



AC31 x 01 pcs : Frog Lights (Pair) with Accessories

AC05 x 08 pcs : M6 x 12mmL x P1 Steel Hex Socket (Allen Key) & Domed Head Bolt

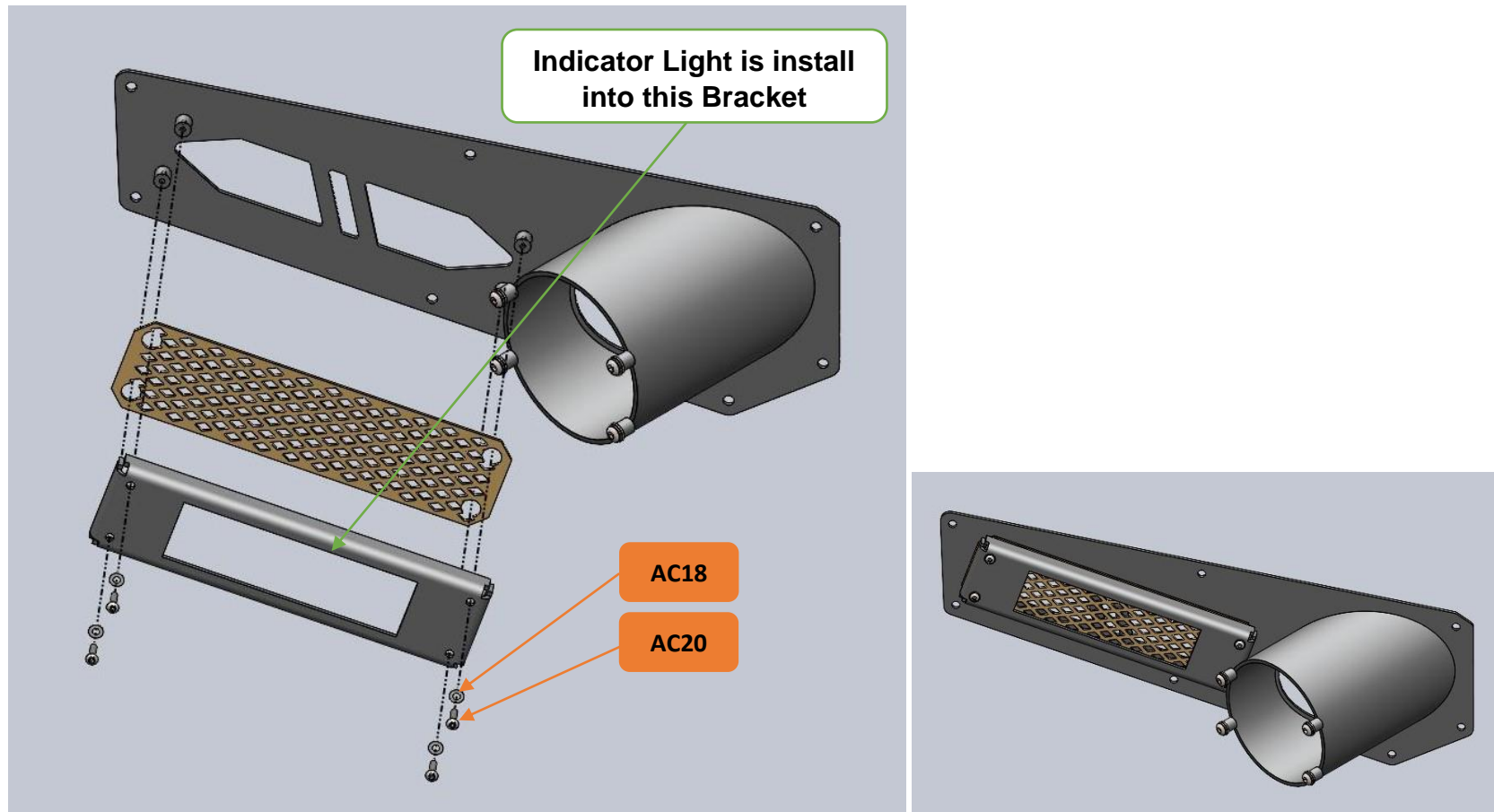
AC13 x 08 pcs : Steel Spring Washer M6

AC19 x 08 pcs : Steel Flat Washer M6 x 6.6mmID x 15mmOD x 2mmT

Bolt Tightening Torque: 10(Nm)

WI-015-R0

STEP 5.2: Install Indicator Light into Light Panel LH & RH, bolted both side with 8 positions.



AC32 x 01 pcs : Indicator Lights (Pair)

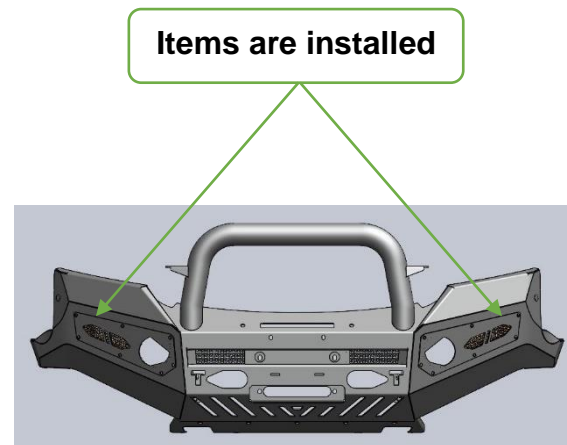
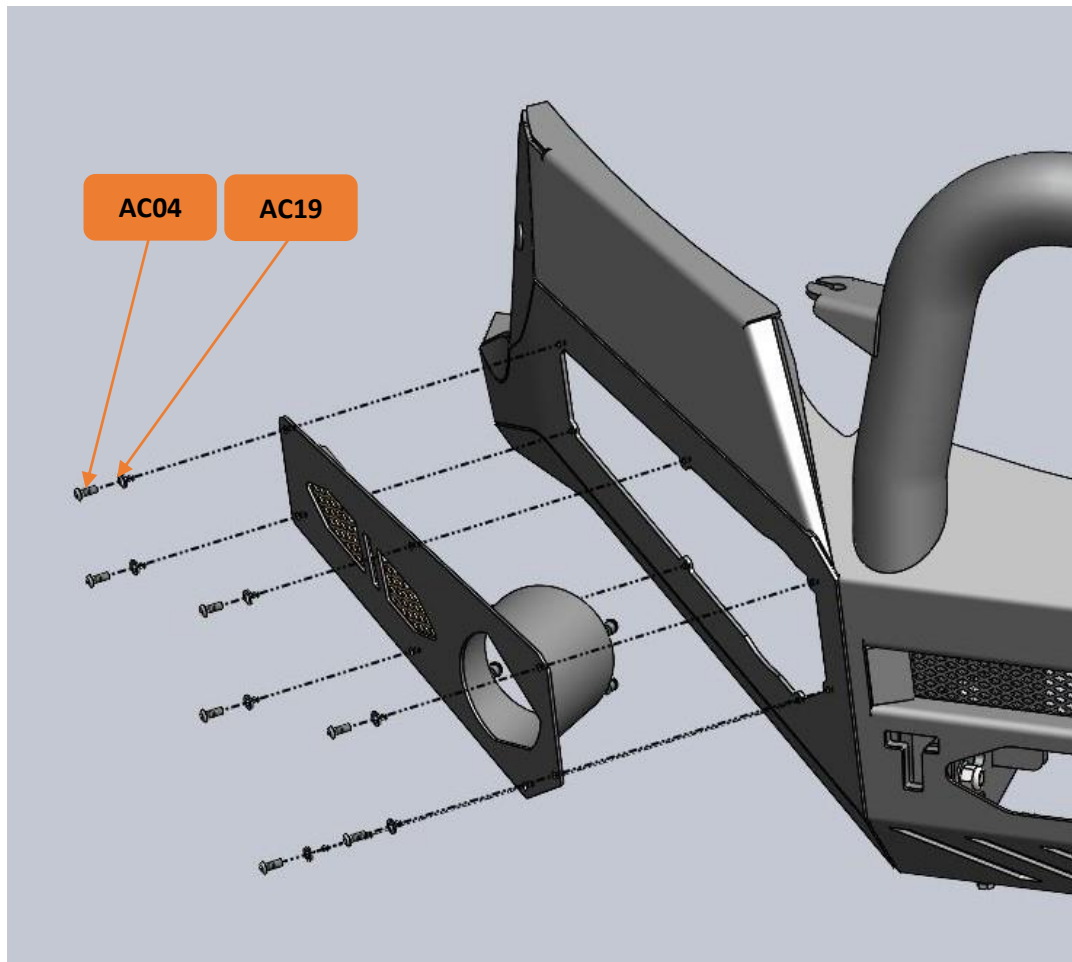
AC18 x 08 pcs : Steel Flat Washer M4 x 4.3mmID x 9mmOD x 0.8mmT

AC20 x 08 pcs : M4 x 15mmL x P0.7 Hex Socket (Allen Key) & Domed Head Bolt

Bolt Tightening Torque: 3(Nm)

WI-015-R0

STEP 5.3: Install Light Panel LH & RH, bolted both sides with 14 positions.



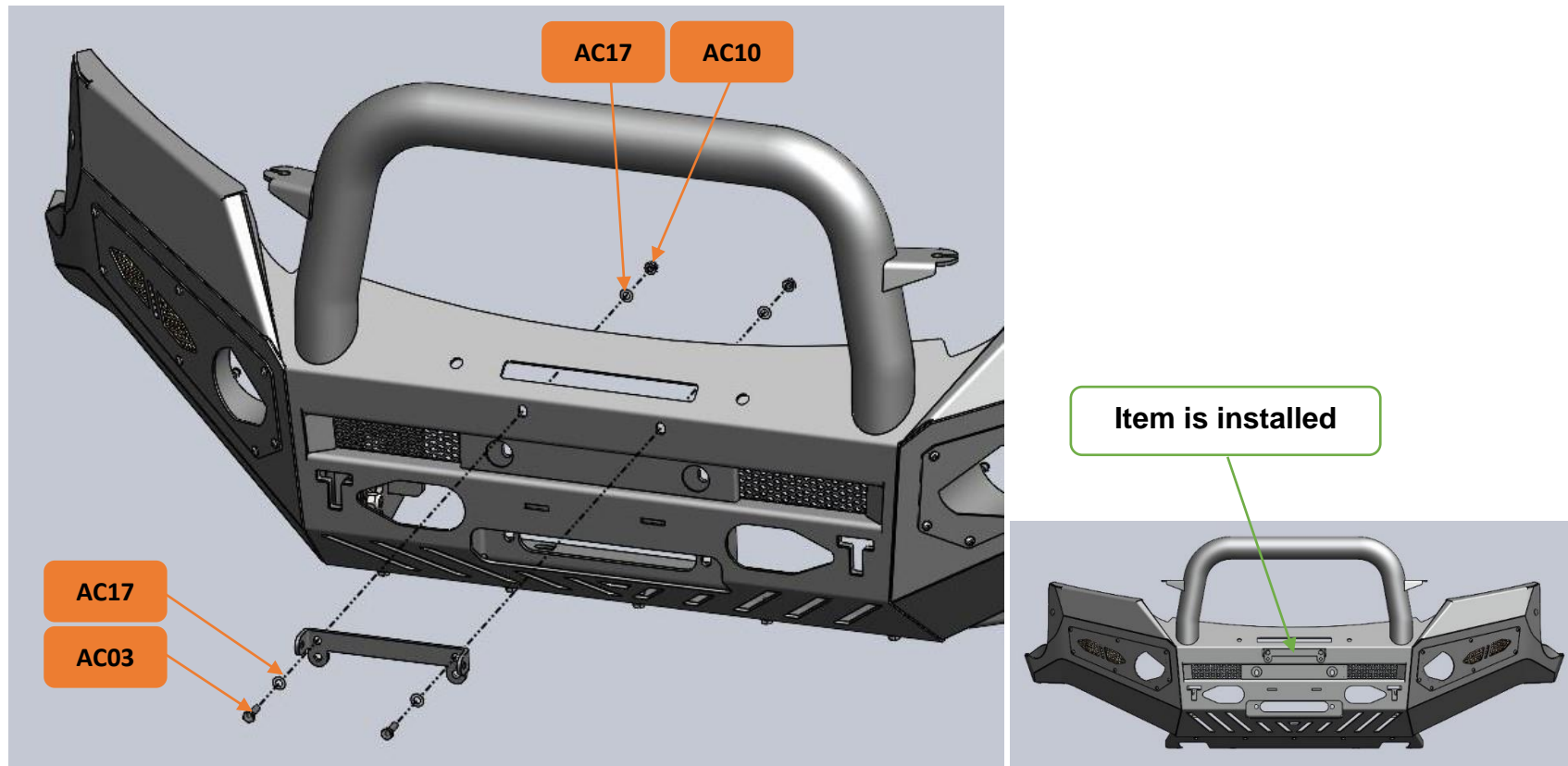
AC04 x 14 pcs : M6 x 16mmL x P1 Steel Hex Socket (Allen Key) & Domed Head Bolt

AC19 x 14 pcs : Steel Flat Washer M6 x 6.6mmID x 15mmOD x 2mmT

Bolt Tightening Torque: 10(Nm)

WI-015-R0

STEP 6.1: Install License Bracket into Bull Bar, bolted with 2 positions.



AC03 x 02 pcs : Hex Head Bolt M8 x 25mmL x P1.25

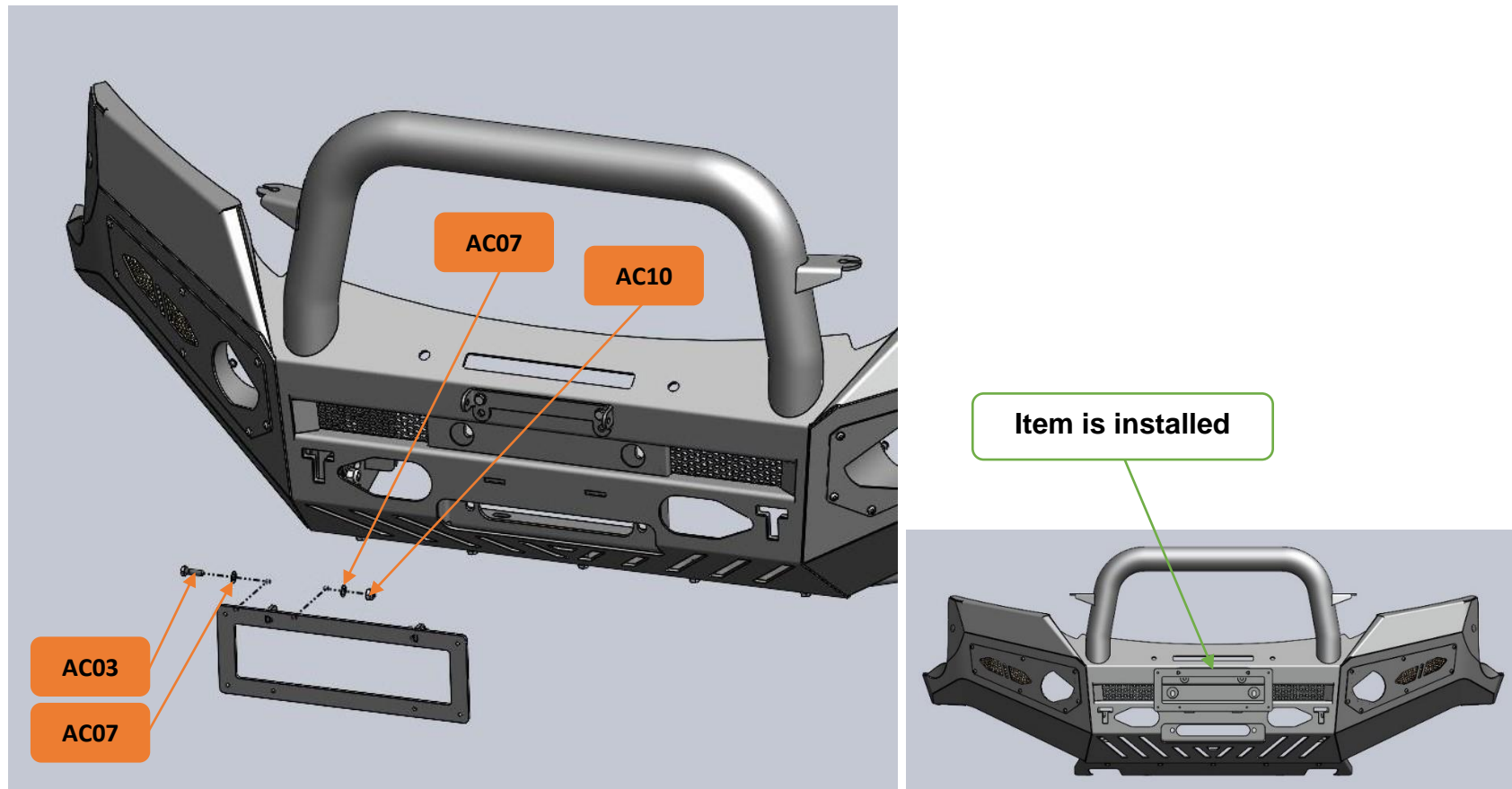
AC10 x 02 pcs : Nylock Nut M8 x 1.25

AC17 x 04 pcs : Steel Flat Washer M8 x 8.5mmID x 17mmOD x 1.5mmT

Bolt Tightening Torque: 24(Nm)

WI-015-R0

STEP 6.2: Install License Plate Bracket, bolted with 2 positions.



AC03 x 02 pcs : Hex Head Bolt M8 x 25mmL x P1.25

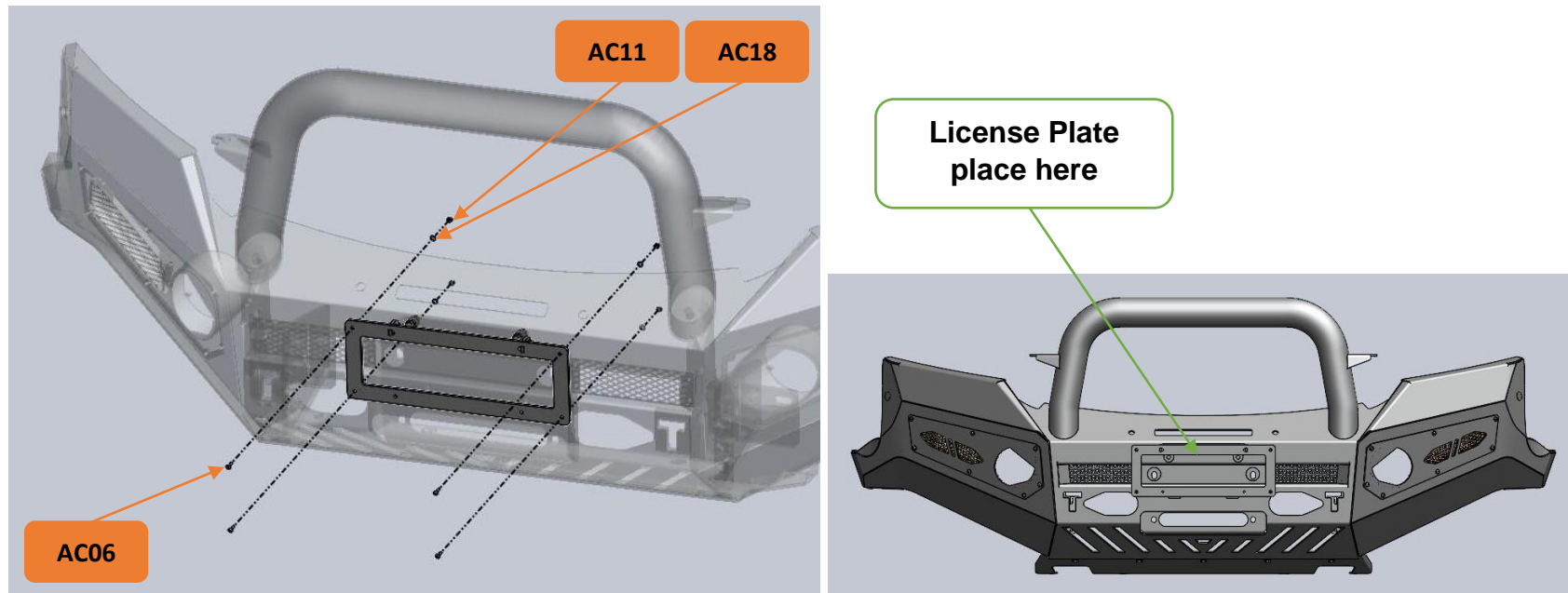
AC10 x 02 pcs : Nylock Nut M8 x 1.25

AC17 x 04 pcs : Steel Flat Washer M8 x 8.5mmID x 17mmOD x 1.5mmT

Bolt Tightening Torque: 24(Nm)

WI-015-R0

STEP 6.3: Install License Plate into the Bracket, bolted with 4 positions.



AC06 x 04 pcs : M4 x 15mmL x P0.7 Hex Socket (Allen Key) & Domed Head Bolt

AC11 x 04 pcs : Nylock Nut M4 x 0.5

AC18 x 04 pcs : Steel Flat Washer M4 x 4.3mmID x 9mmOD x 0.8mmT

Bolt Tightening Torque: 3(Nm)

Recommendation:

Due to the variation of vehicle chassis some shimming may be required by using the extra washers supplied (**AC16**) to assist in lining up the bar where required.

----- END -----