

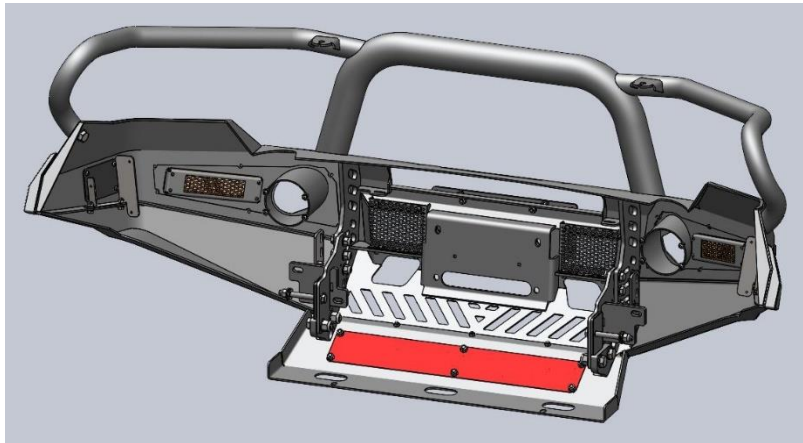
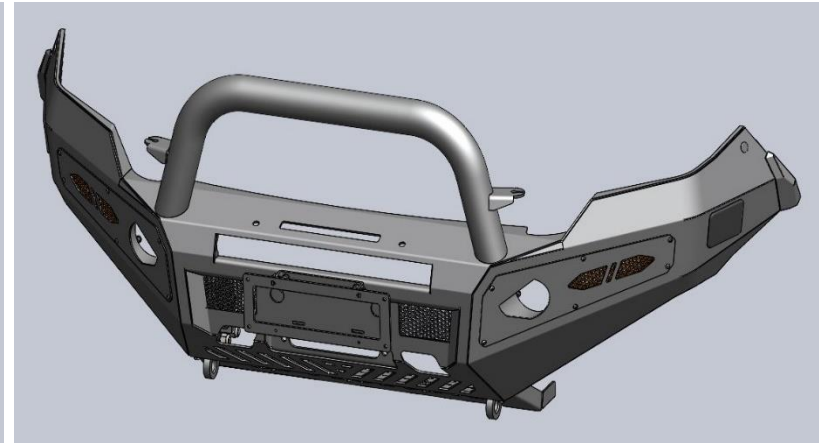
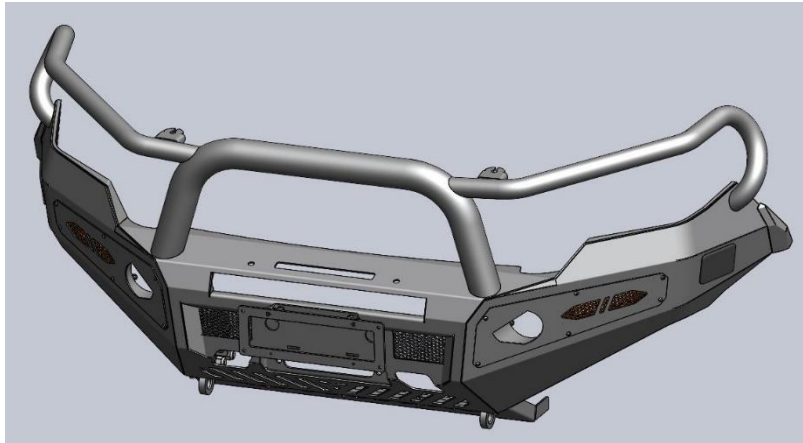
Fasteners Assembly Instructions for BT50

Applying for products:

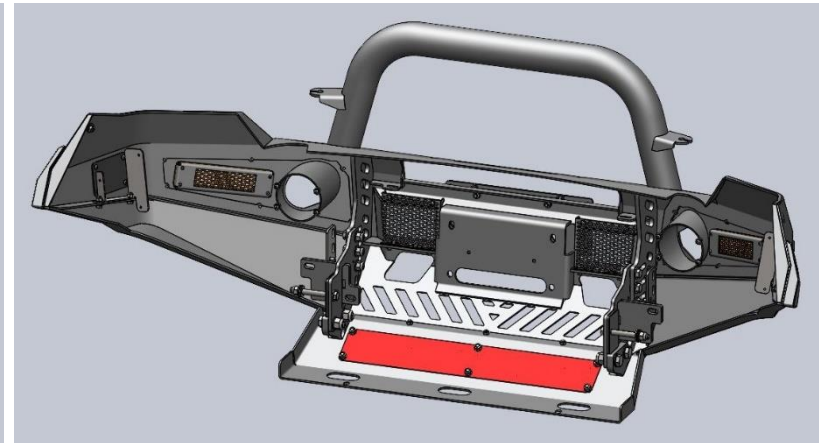
1148-BT50-2022-NH
 1148-BT50-2022-SH
 1148-BT50-2022-LH
 1148-BT50-2022-3H

Part number	Description	Qty/per set
AC01	Hex Head Bolt M12 x 40mmL x P1.25	6
AC02	Nyloc Nut M12 x P1.25	8
AC03	Steel Nord Lock Washer M12 x 13mmID x 19mmOD x 2.2mmT	6
AC04	Steel Flat Washer M12 x 13mmID x 26mmOD x 2.2mmT	22
AC05	Hex Head Bolt M16 x 30mmL x P2.0	4
AC06	Steel Flat Washer M16 x 17mmID x 30mmOD x 2.5mmT	12
AC07	M4 x 12mmL x P0.7 Hex socket (allen Key) & Domed Head Bolt	8
AC08	Steel Flat Washer M8 x 8.4mmID x 17mmOD x 2.5mmT	25
AC09	Steel Spring Washer M8	11
AC10	Hex Head Bolt M8 x 25mmL x P1.25	4
AC11	Nyloc Nut M8 x P1.25	10
AC12	M6 x 12mmL x P1 Steel Hex socket (allen Key) & Domed Head Bolt	22
AC13	Steel Spring Washer M6	26
AC14	Steel Flat Washer M6 x 6.6mmID x 15mmOD x 2mmT	22
AC15	M4 x 16mmL x P0.7 Hex socket (allen Key) & Domed Head Bolt	12
AC16	Steel Flat Washer M4 x 4.3mmID x 9mmOD x 0.8mmT	4
AC17	Nyloc Nut M4 x P0.7	4
AC18	Hex Head Bolt M8 x 20mmL x P 1.25	11
AC19	Steel Bolt M12 x 110 x P1.25	2
AC20	Steel Bolt M16 x 50 x P2.0	4
AC21	Steel Nyloc Nut M16 x P2.0	4
AC22	Steel Spring Washer M4	16
AC26	M6 x 18mmL x P1 Steel Hex socket (allen Key) & Domed Head Bolt	8
AC27	M6 x 10mmL x P1 Steel Hex socket (allen Key) & Domed Head Bolt	8
AC28	Steel Flat Head Screw M6 x 16	2
AC29	Steel Nyloc Nut M6 x P1.0	2
AC30	Electric Cable Packed	1
AC31	Frog Lights (Pair) with Accessories	1
AC32	Indicator Lights (Pair)	1
AC33	Hex Head Bolt M6 x 20mmL x P1.0	2

GENERAL VIEW

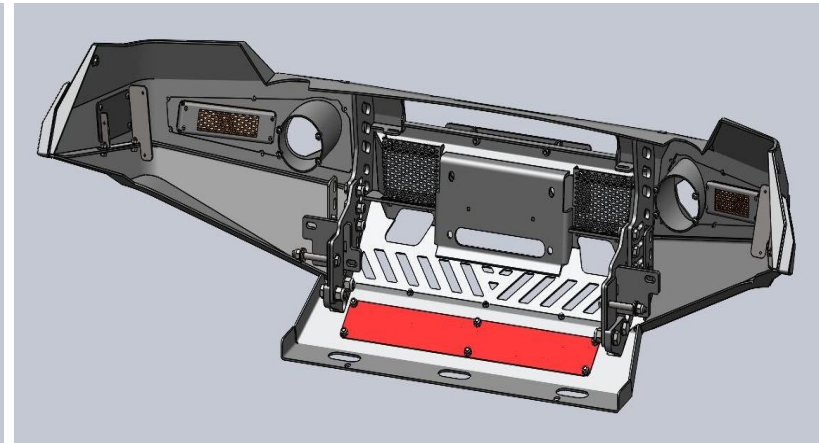
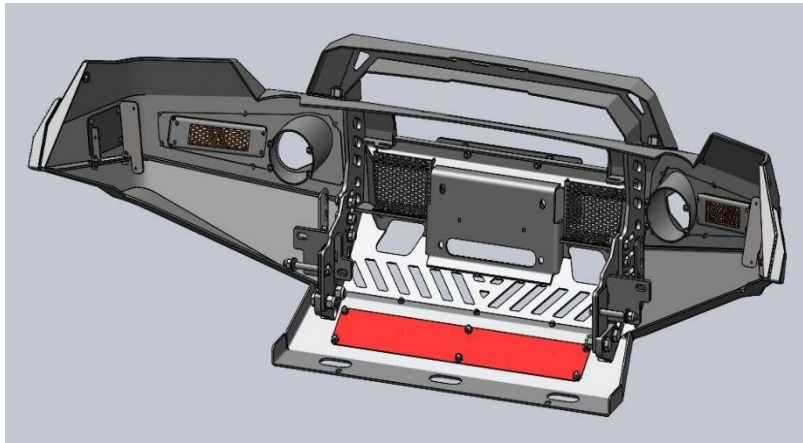
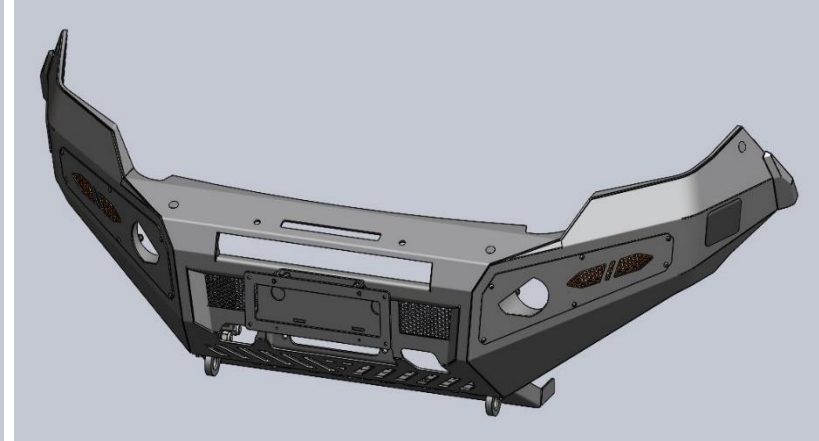
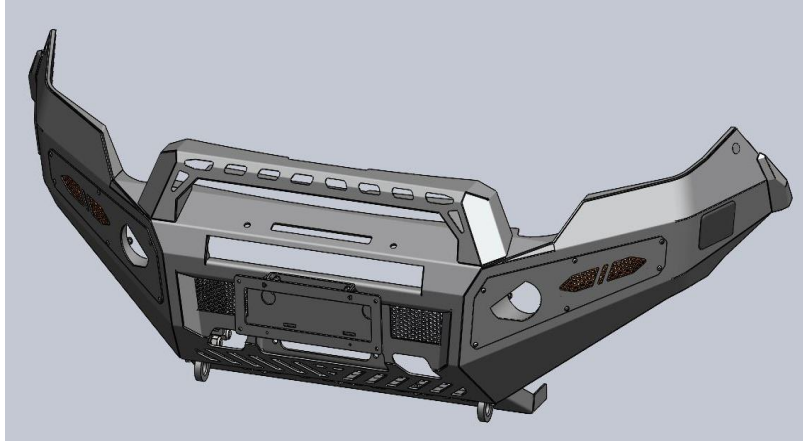


3 HOOP



SINGLE HOOP

GENERAL VIEW

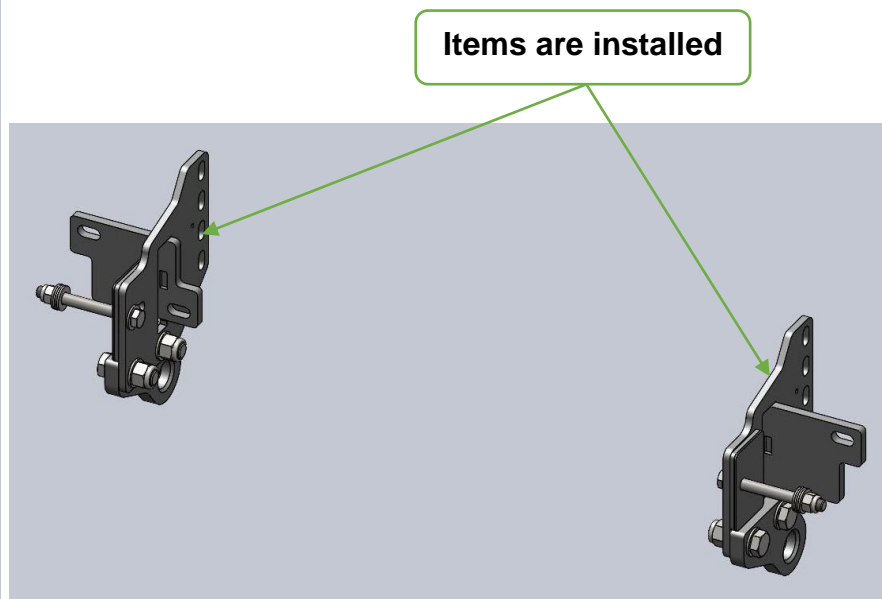
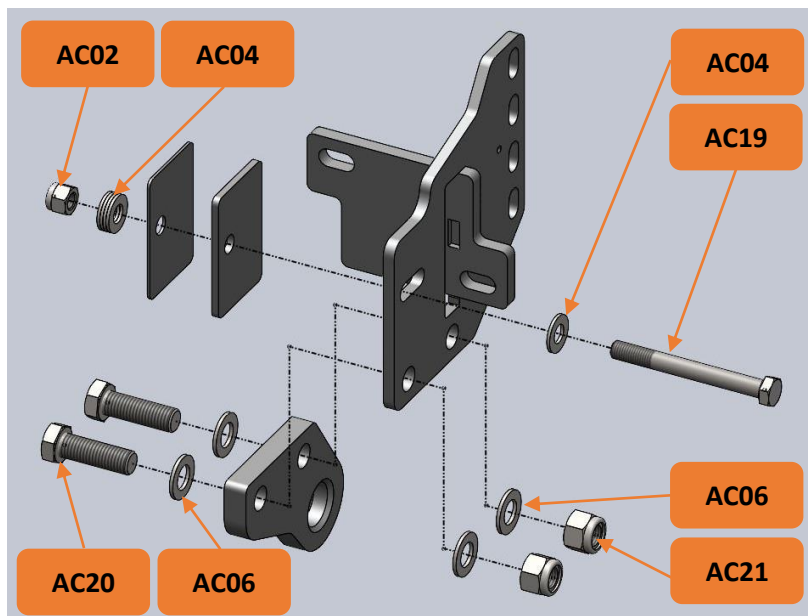


LOW HOOP

NO HOOP

WI-010-R0

STEP 1: Install Brackets into the Car, bolted both sides with 6 positions.



AC02 x 02 pcs : Nyloc Nut M12 x P1.25

AC04 x 10 pcs : Steel Flat Washer M12 x 13mmID x 26mmOD x 2.2mmT

AC19 x 02 pcs : Steel Bolt M12 x 110 x P1.25

Bolt Tightening Torque: 88(Nm)

AC06 x 08 pcs : Steel Flat Washer M16 x 17mmID x 30mmOD x 2.5mmT

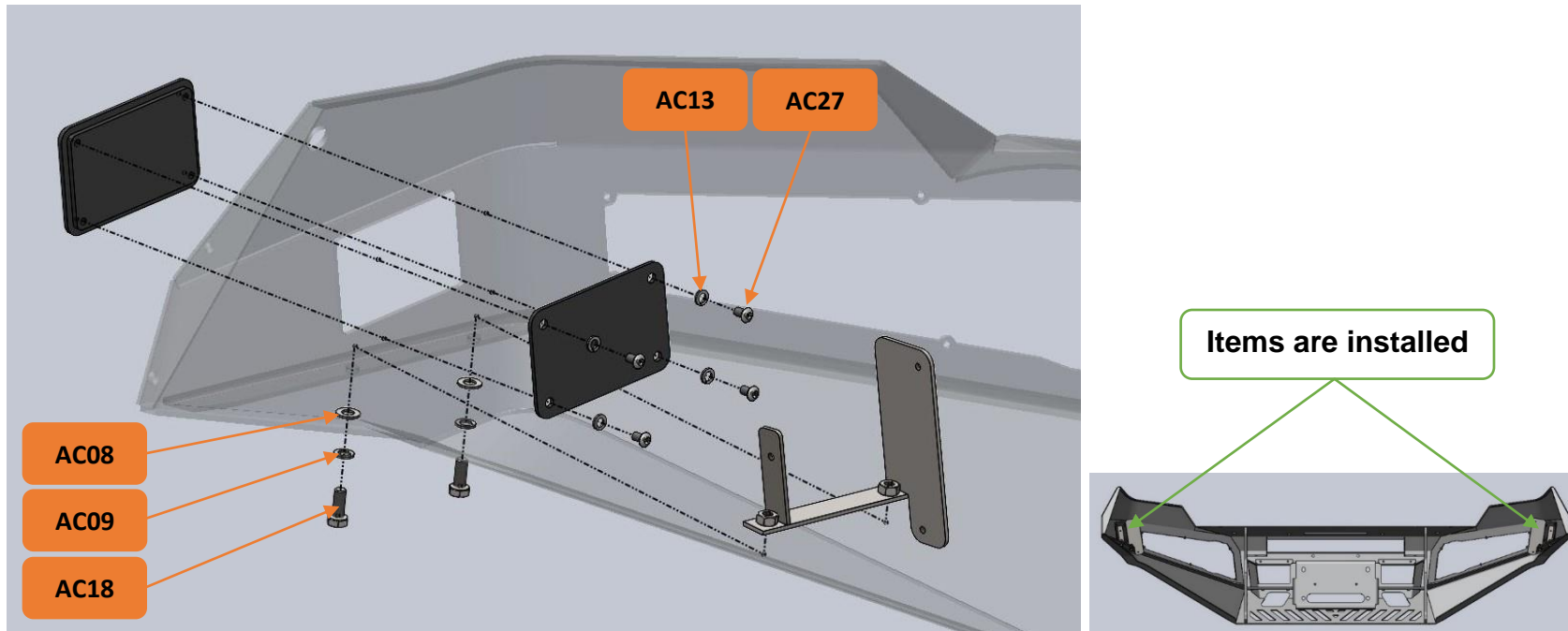
AC20 x 04 pcs : Steel Bolt M16 x 50 x P2.0

AC21 x 04 pcs : Steel Nyloc Nut M16 x P2.0

Bolt Tightening Torque: 88(Nm)

WI-010-R0

STEP 2.1: Install Sensor Bracket RHS & LHS into the Bull Bar Body, bolted both sides with 12 positions.



AC13 x 08 pcs : Steel Spring Washer M6

AC27 x 08 pcs : M6 x 10mmL x P1 Steel Hex socket (allen Key) & Domed Head Bolt

Bolt Tightening Torque: 10(Nm)

AC08 x 04 pcs : Steel Flat Washer M8 x 8.4mmID x 17mmOD x 2.5mmT

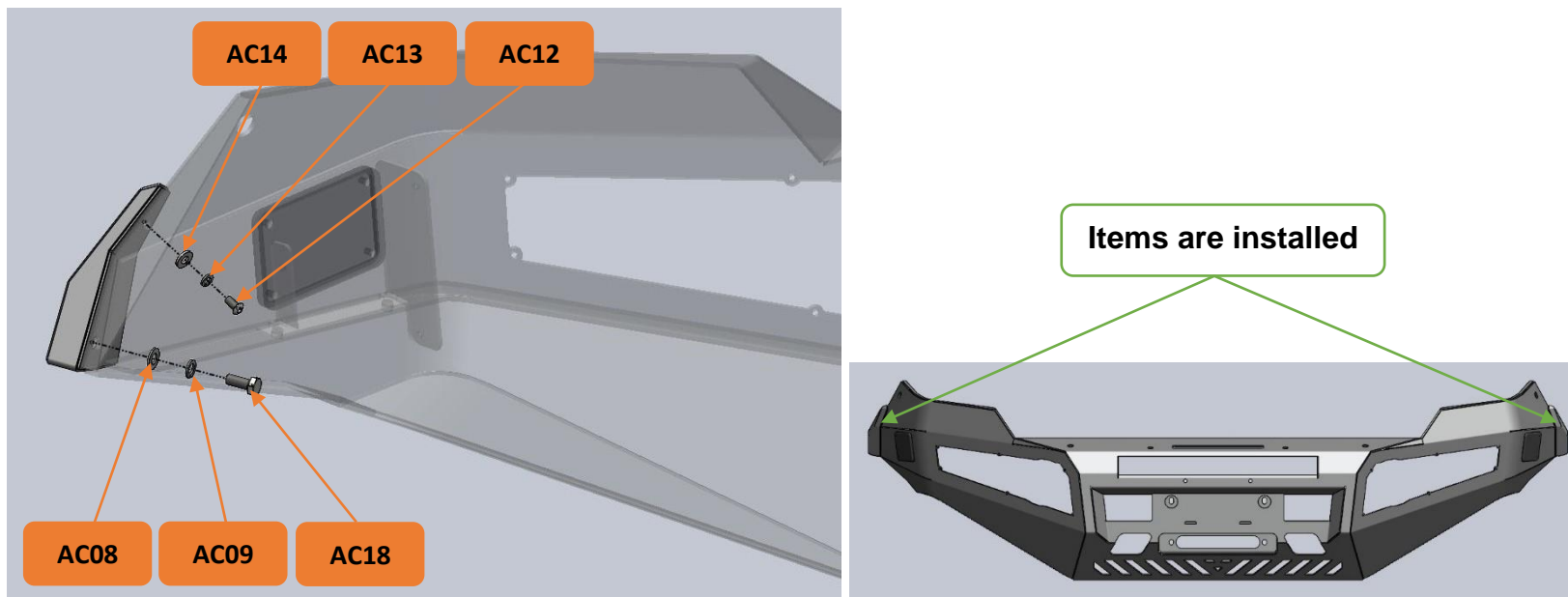
AC09 x 04 pcs : Steel Spring Washer M8

AC18 x 04 pcs : Hex Head Bolt M8 x 20mmL x P 1.25

Bolt Tightening Torque: 24(Nm)

WI-010-R0

STEP 2.2: Install Flare Cover RHS & LHS into the Bull Bar Body, bolted both sides with 4 positions.



AC08 x 04 pcs : Steel Flat Washer M8 x 8.4mmID x 17mmOD x 2.5mmT

AC09 x 04 pcs : Steel Spring Washer M8

AC18 x 04 pcs : Hex Head Bolt M8 x 20mmL x P 1.25

Bolt Tightening Torque: 24(Nm)

AC12 x 04 pcs : M6 x 12mmL x P1 Steel Hex socket (allen Key) & Domed Head Bolt

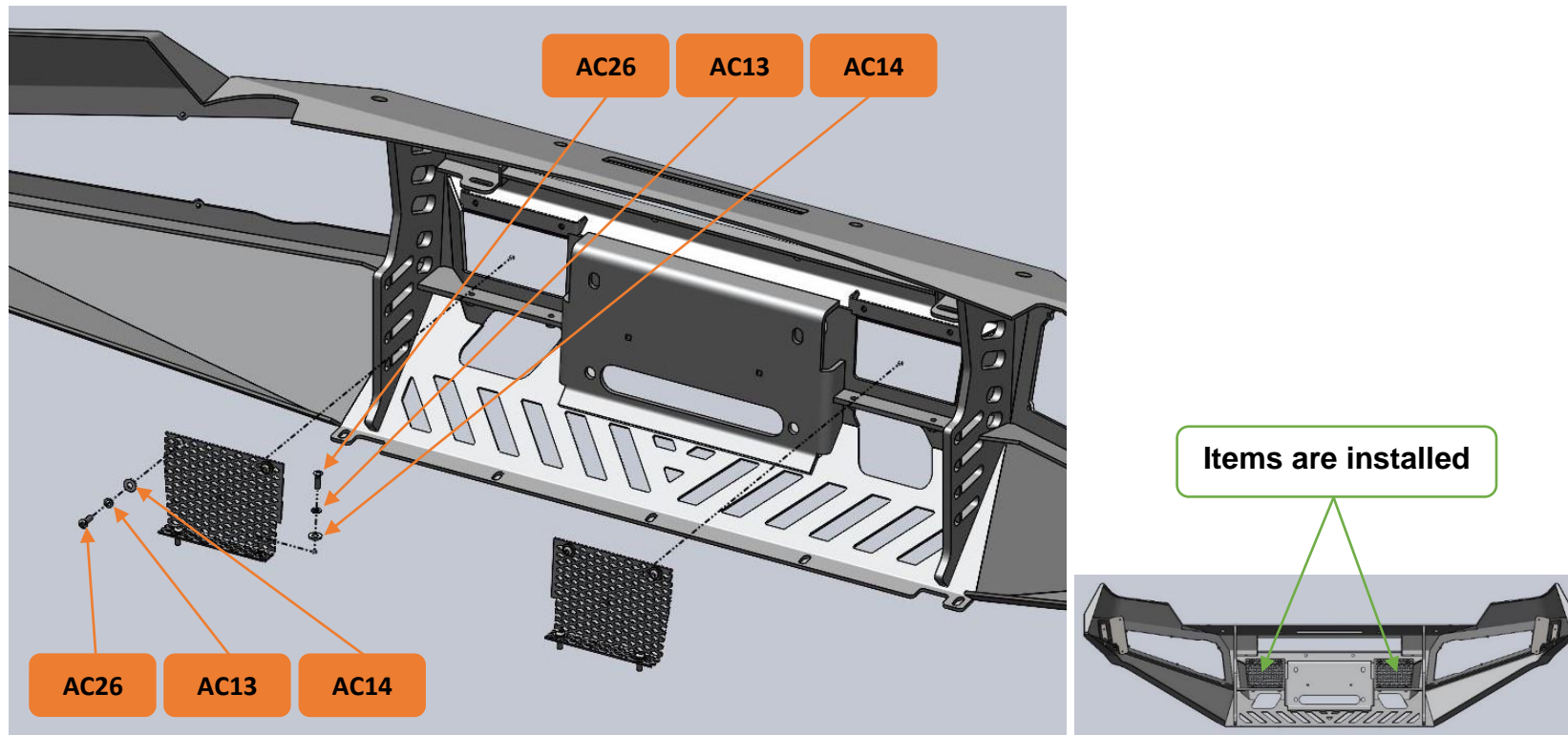
AC13 x 04 pcs : Steel Spring Washer M6

AC14 x 04 pcs : Steel Flat Washer M6 x 6.6mmID x 15mmOD x 2mmT

Bolt Tightening Torque: 10(Nm)

WI-010-R0

STEP 2.3: Install Mesh into the Bull Bar Body, bolted both sides with 8 positions.



AC13 x 04 pcs : Steel Spring Washer M6

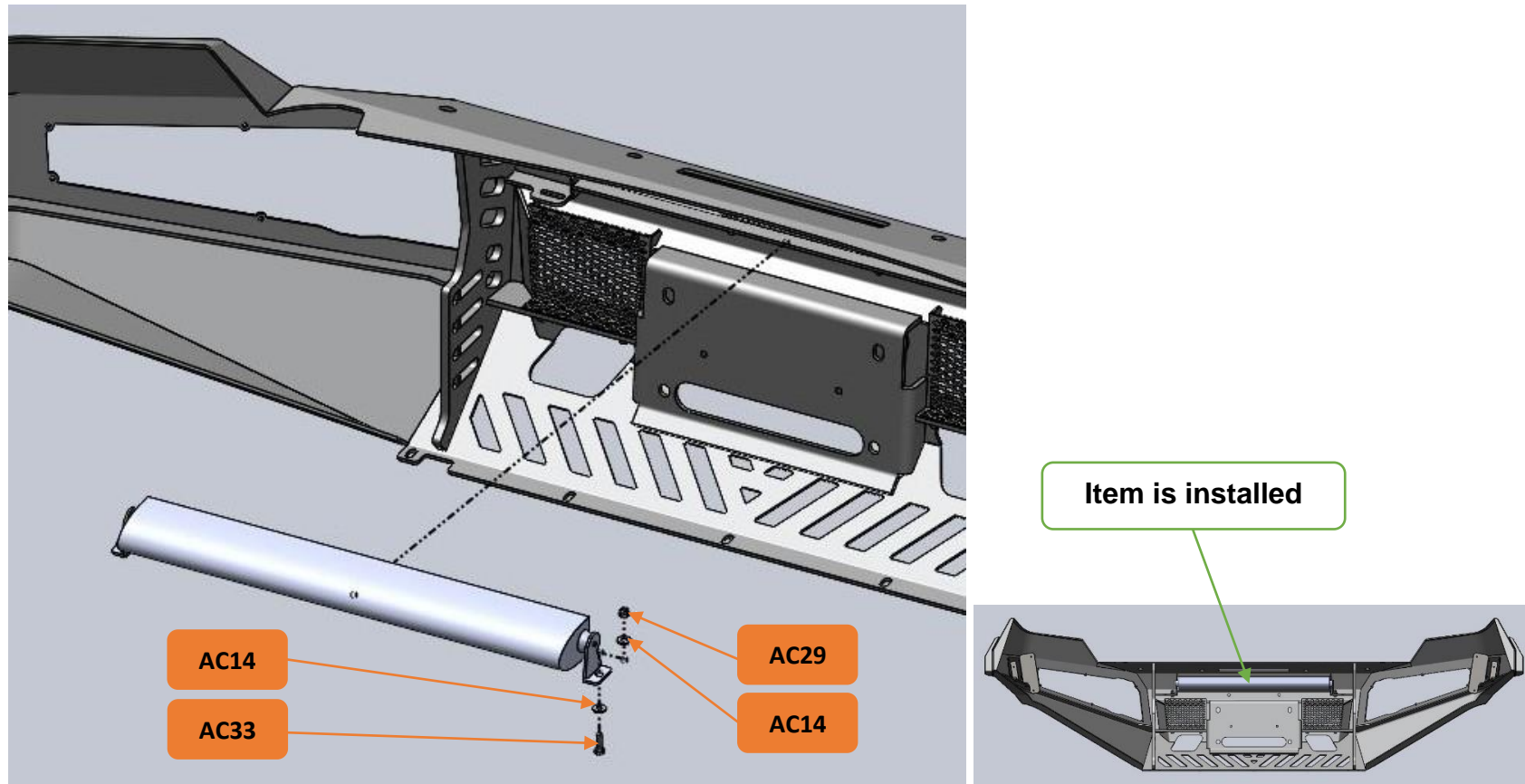
AC14 x 04 pcs : Steel Flat Washer M6 x 6.6mmID x 15mmOD x 2mmT

AC26 x 04 pcs : M6 x 18mmL x P1 Steel Hex socket (allen Key) & Domed Head Bolt

Bolt Tightening Torque: 10(Nm)

WI-010-R0

STEP 2.4: Install Single LED Bar into the Bull Bar Body, bolted with 2 positions.



AC14 x 04 pcs : Steel Flat Washer M6 x 6.6mmID x 15mmOD x 2mmT

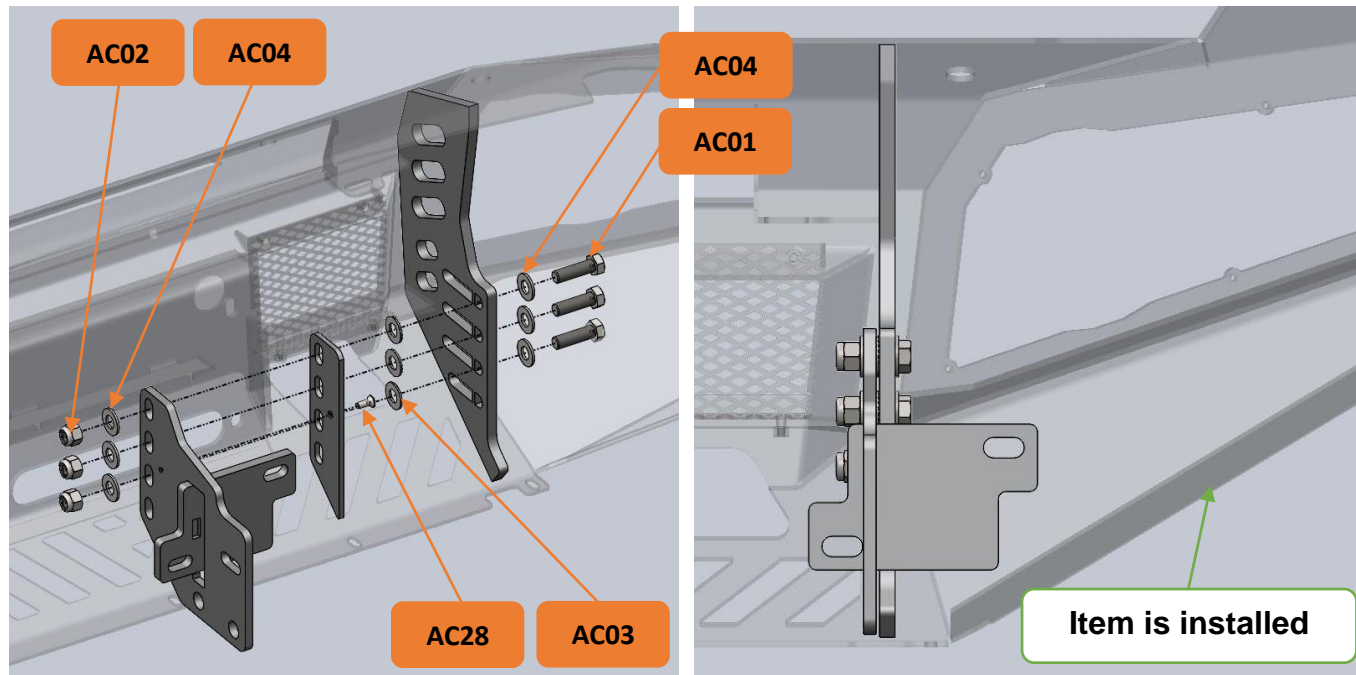
AC29 x 02 pcs : Steel Nyloc Nut M6 x P1.0

AC33 x 02 pcs : Hex Head Bolt M6 x 20mmL x P1.0

Bolt Tightening Torque: 10(Nm)

WI-010-R0

STEP 2.5: Install Bull Bar Body into the Car, bolted both sides with 8 positions.



AC28 x 02 pcs : Steel Flat Head Screw M6 x 16

Bolt Tightening Torque: 10(Nm)

AC01 x 06 pcs : Hex Head Bolt M12 x 40mmL x P1.25

AC02 x 06 pcs : Nyloc Nut M12 x P1.25

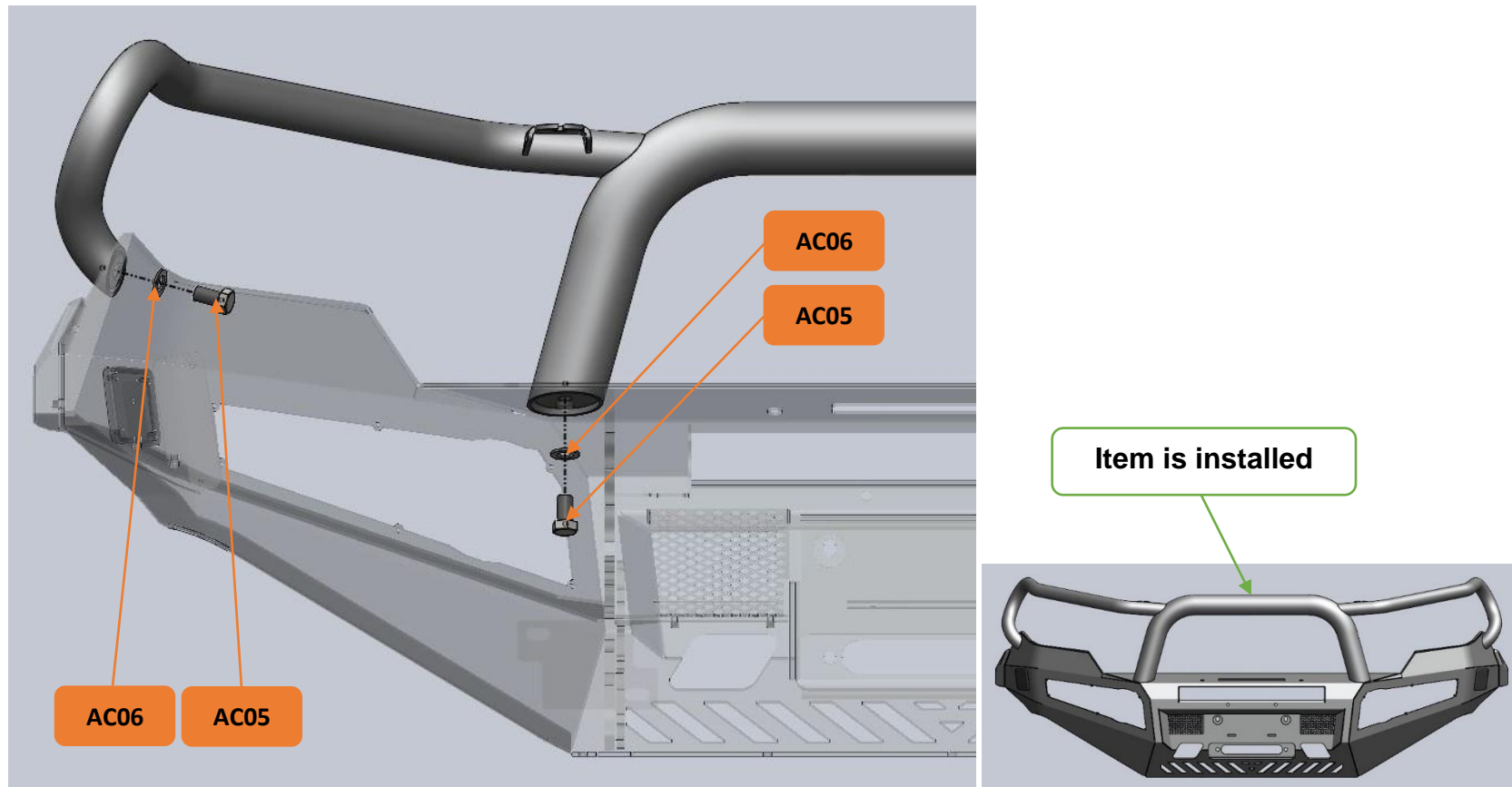
AC03 x 06 pcs : Steel Nord Lock Washer M12 x 13mmID x 19mmOD x 2.2mmT

AC04 x 12 pcs : Steel Flat Washer M12 x 13mmID x 26mmOD x 2.2mmT

Bolt Tightening Torque: 88(Nm)

WI-010-R0

STEP 3.1: Install 3 Hoop into the Car, bolted with 4 positions. **[Use for 3 Hoop only]**



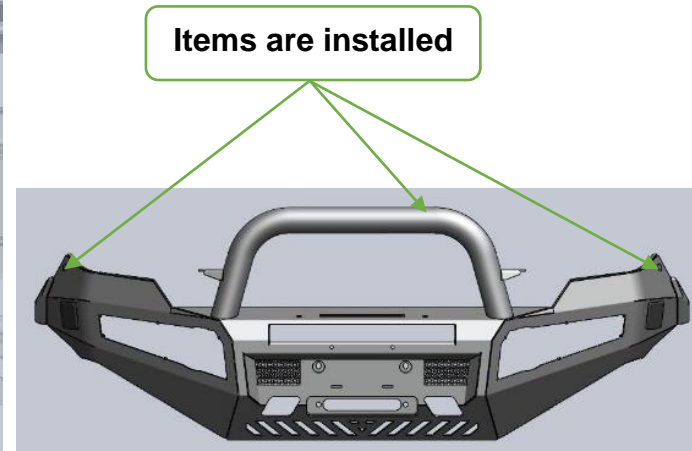
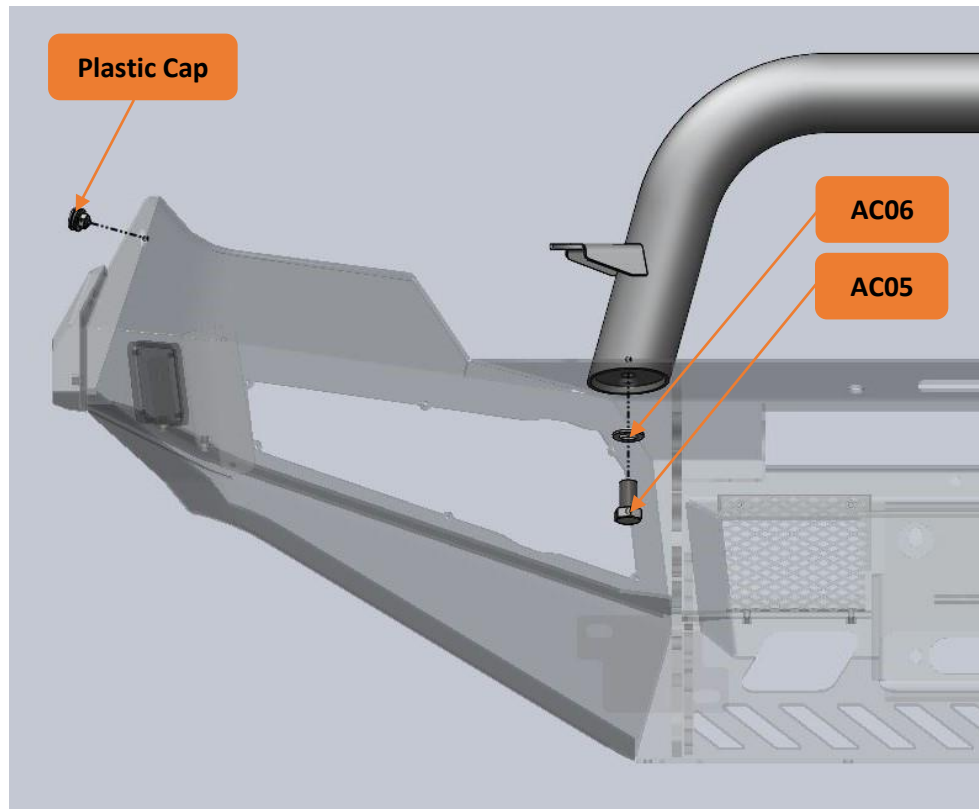
AC05 x 04 pcs : Hex Head Bolt M16 x 30mmL x P2.0

AC06 x 04 pcs : Steel Flat Washer M16 x 17mmID x 30mmOD x 2.5mmT

Bolt Tightening Torque: 88(Nm)

WI-010-R0

STEP 3.2: Install Single Hoop & Plastic Cap into the Car, bolted with 4 positions. **[Use for Single Hoop only]**



Plastic Cap x 02 pcs

Bolt Tightening Torque: 3(Nm)

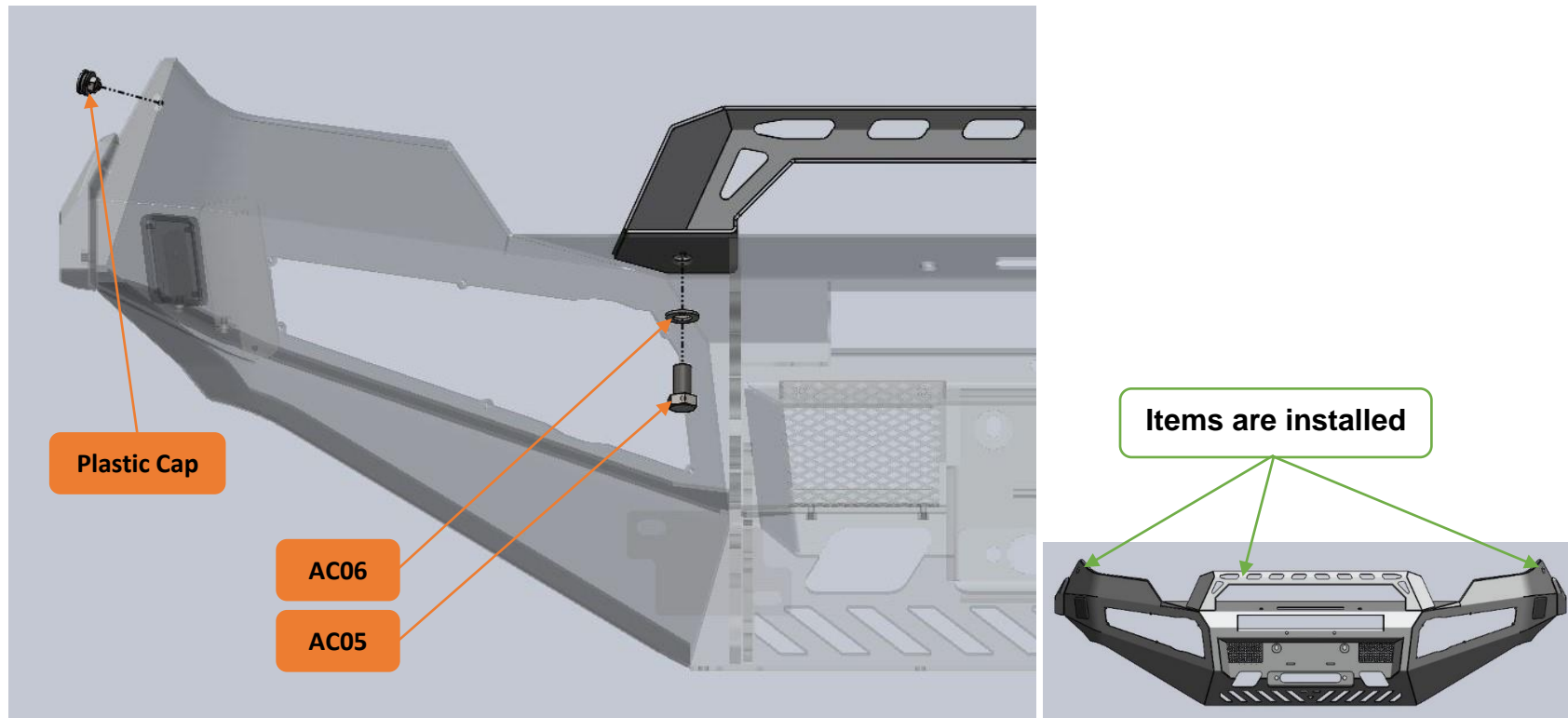
AC05 x 02 pcs : Hex Head Bolt M16 x 30mmL x P2.0

AC06 x 02 pcs : Steel Flat Washer M16 x 17mmID x 30mmOD x 2.5mmT

Bolt Tightening Torque: 88(Nm)

WI-010-R0

STEP 3.3: Install Low Hoop & Plastic Cap into the Car, bolted with 4 positions. **[Use for Low Hoop only]**



Plastic Cap x 02 pcs

Bolt Tightening Torque: 3(Nm)

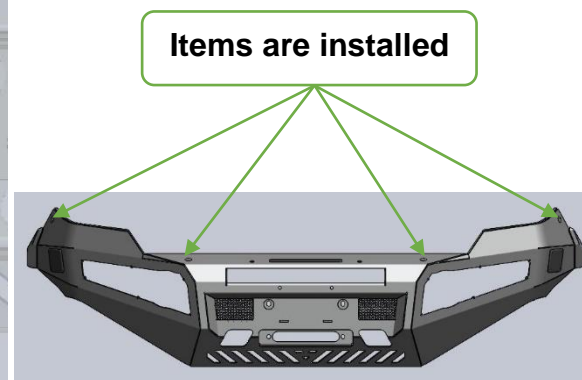
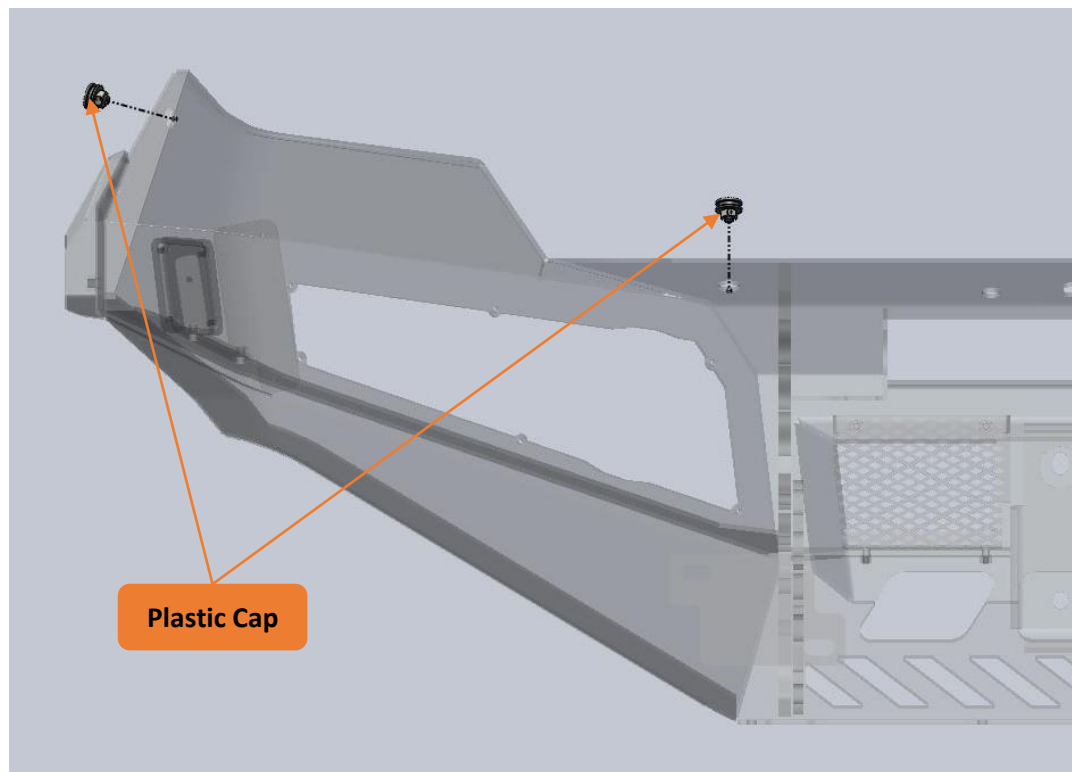
AC05 x 02 pcs : Hex Head Bolt M16 x 30mmL x P2.0

AC06 x 02 pcs : Steel Flat Washer M16 x 17mmID x 30mmOD x 2.5mmT

Bolt Tightening Torque: 88(Nm)

WI-010-R0

STEP 3.4: Install Plastic Cap into the Car, bolted with 4 positions. [Use for No Hoop only]

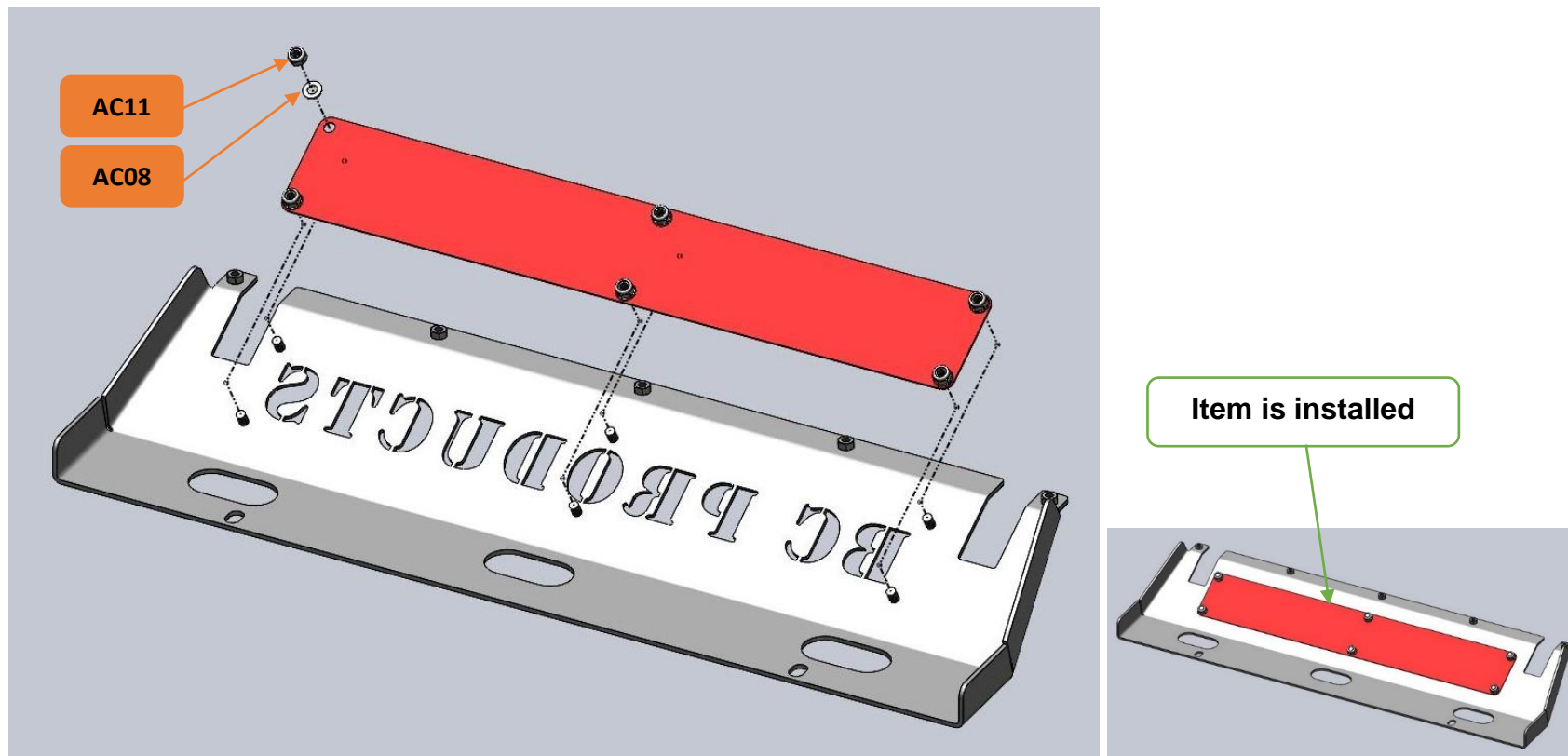


Plastic Cap x 04 pcs

Bolt Tightening Torque: 3(Nm)

WI-010-R0

STEP 4.1: Install Red Plate into Bottom Plate, bolted with 6 positions.



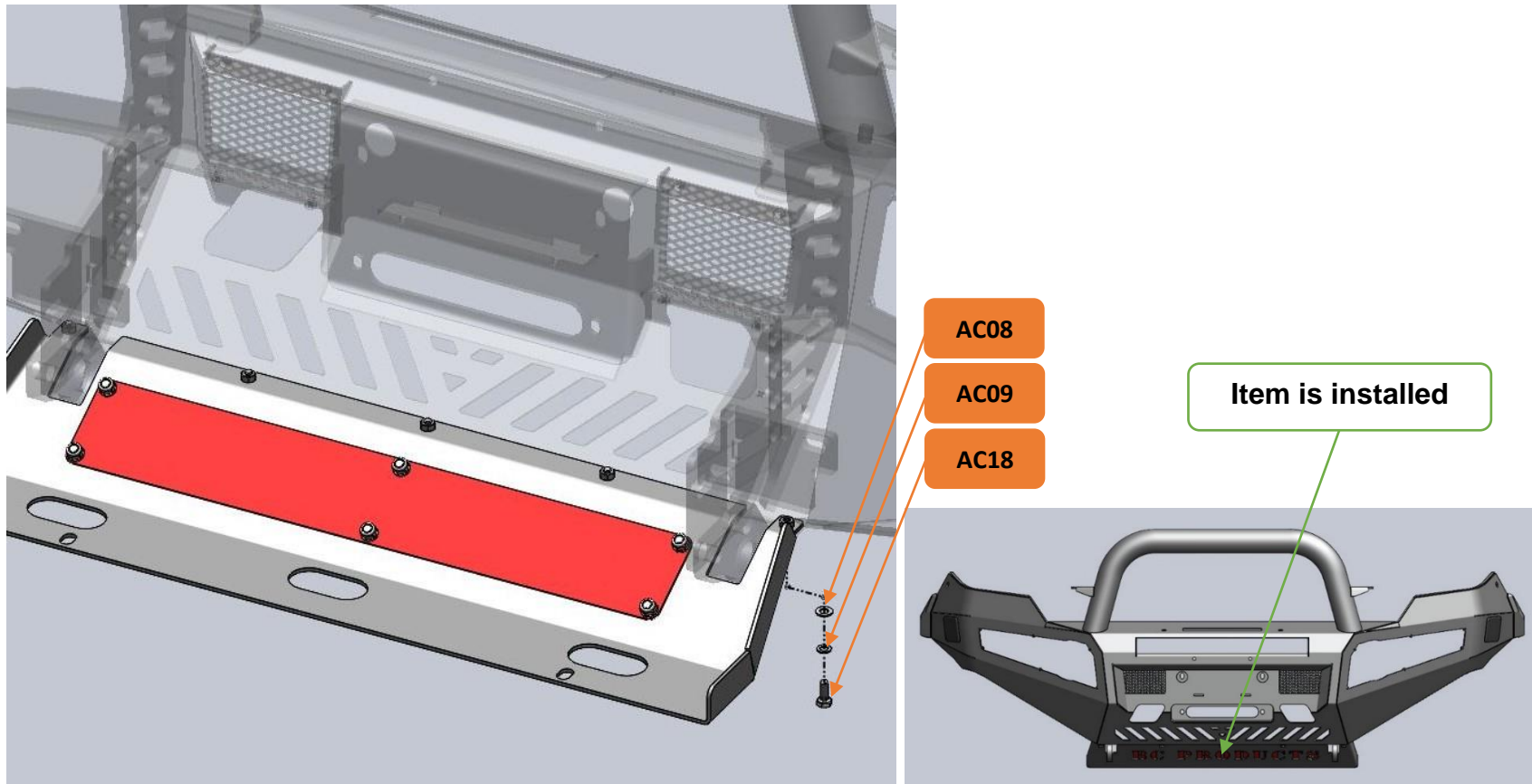
AC08 x 06 pcs : Steel Flat Washer M8 x 8.4mmID x 17mmOD x 2.5mmT

AC11 x 06 pcs : Nyloc Nut M8 x P1.25

Bolt Tightening Torque: 24(Nm)

WI-010-R0

STEP 4.2: Install Bottom Plate into the Car, bolted with 5 positions.



AC08 x 05 pcs : Steel Flat Washer M8 x 8.4mmID x 17mmOD x 2.5mmT

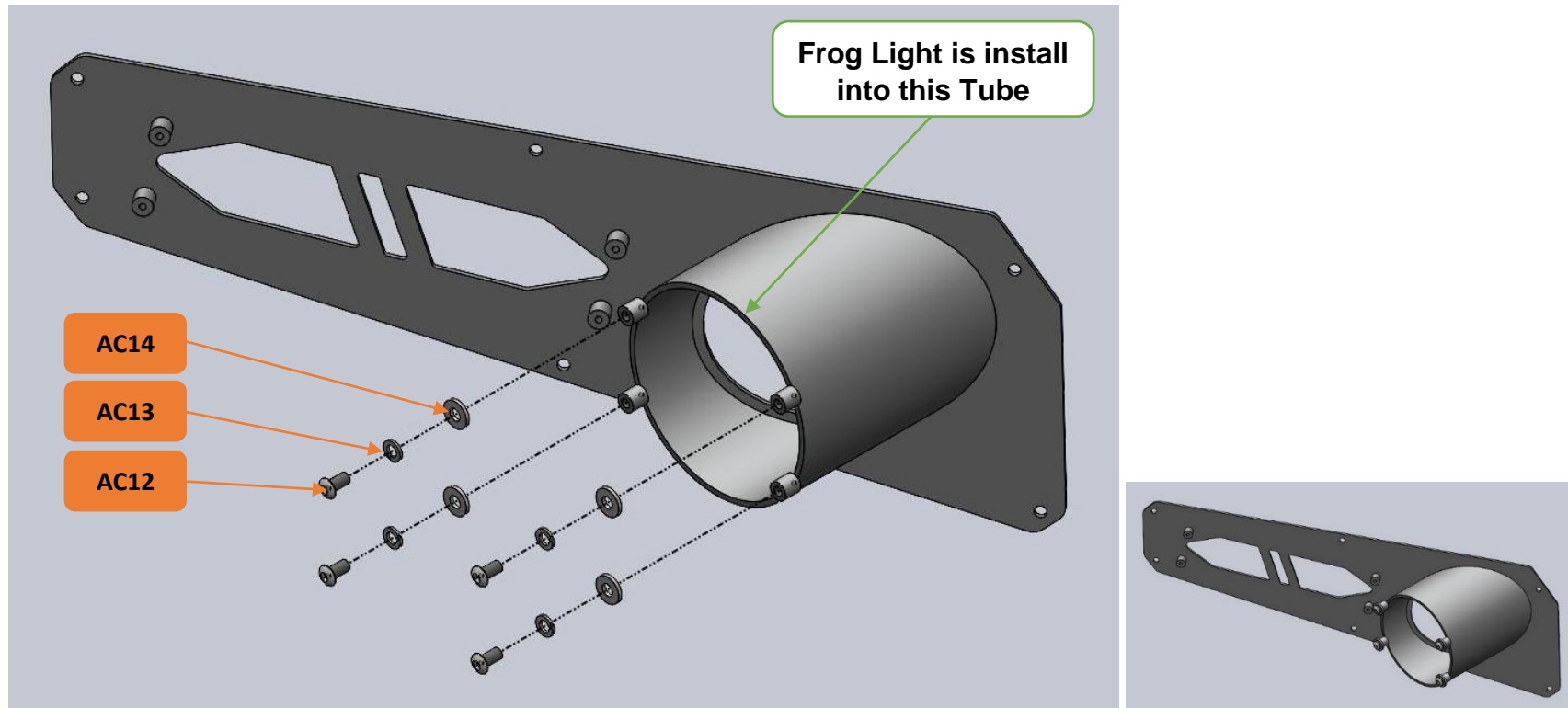
AC09 x 05 pcs : Steel Spring Washer M8

AC18 x 05 pcs : Hex Head Bolt M8 x 20mmL x P 1.25

Bolt Tightening Torque: 24(Nm)

WI-010-R0

STEP 5.1: Install Frog Light into Light Panel LH & RH, bolted both side with 8 positions.



AC31 x 01 pcs : Frog Lights (Pair) with Accessories

AC12 x 08 pcs : M6 x 12mmL x P1 Steel Hex socket (allen Key) & Domed Head Bolt

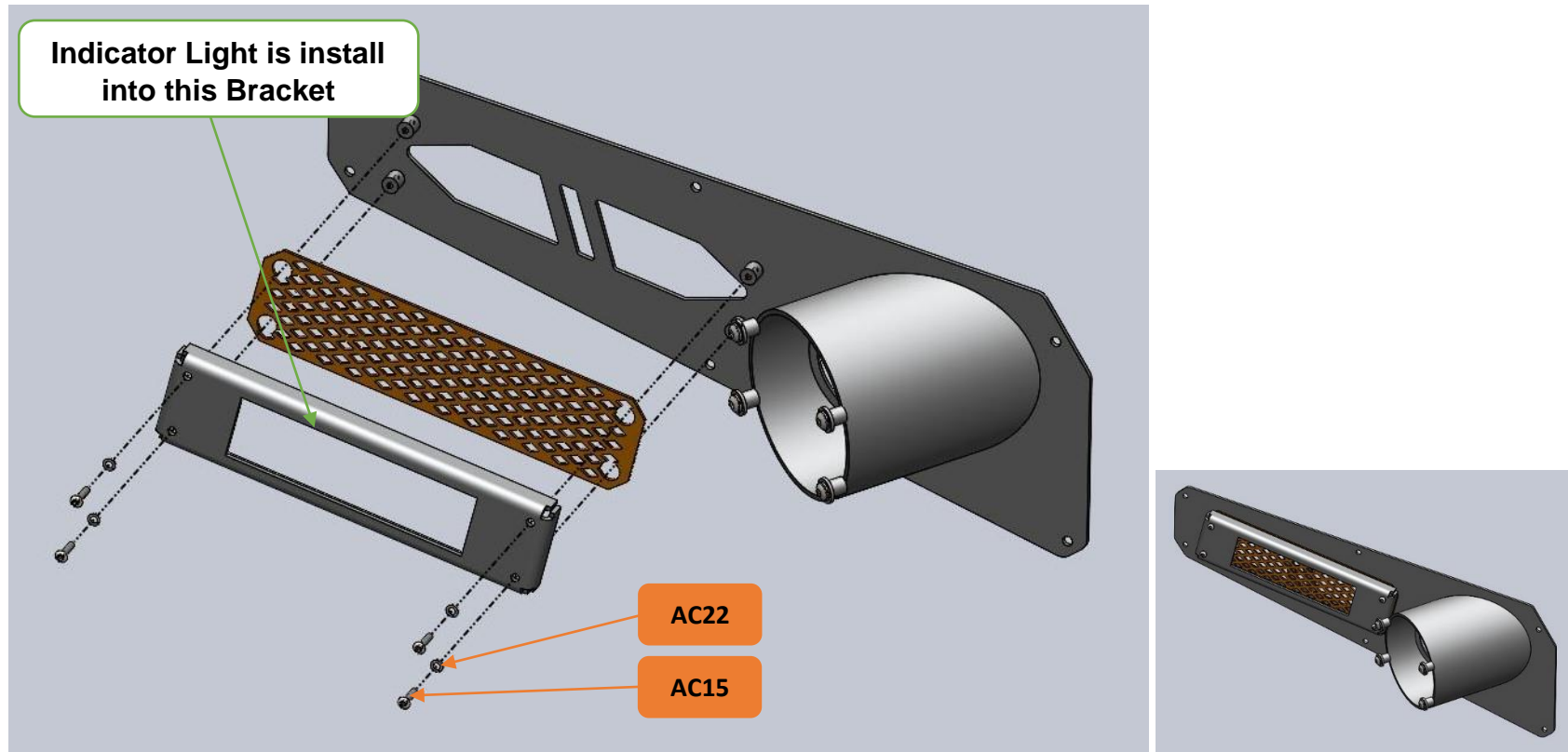
AC13 x 08 pcs : Steel Spring Washer M6

AC14 x 08 pcs : Steel Flat Washer M6 x 6.6mmID x 15mmOD x 2mmT

Bolt Tightening Torque: 10(Nm)

WI-010-R0

STEP 5.2: Install Indicator Light into Light Panel LH & RH, bolted both side with 8 positions.



AC32 x 01 pcs : Indicator Lights (Pair)

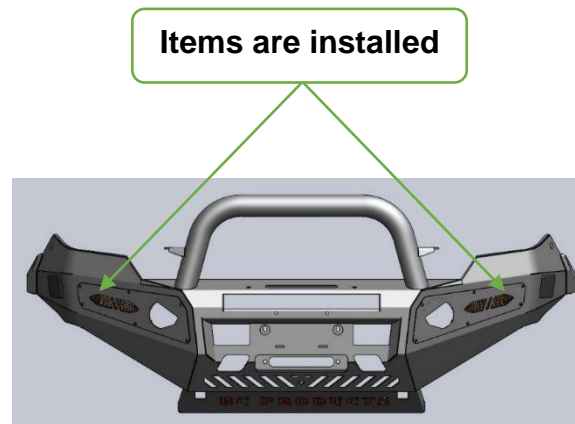
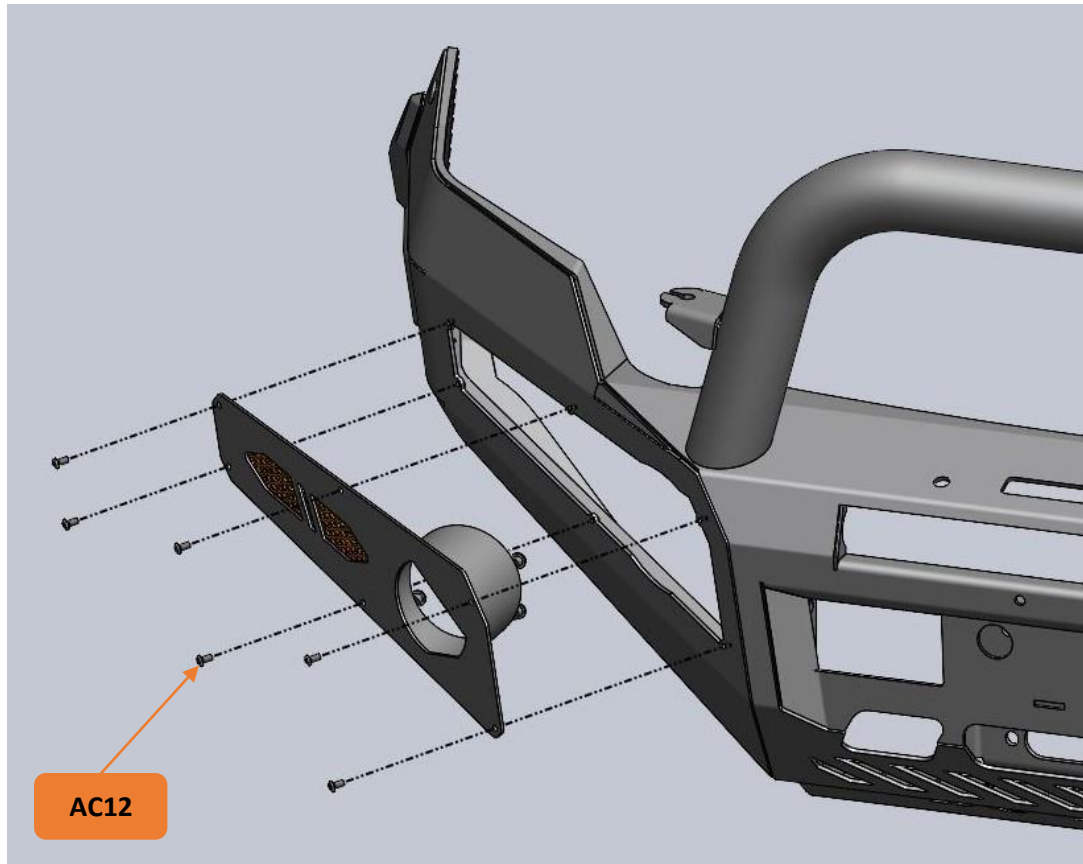
AC15 x 08 pcs : M4 x 16mmL x P0.7 Hex socket (allen Key) & Domed Head Bolt

AC22 x 08 pcs : Steel Spring Washer M4

Bolt Tightening Torque: 3(Nm)

WI-010-R0

STEP 5.3: Install Light Panel LH & RH, bolted both sides with 12 positions.

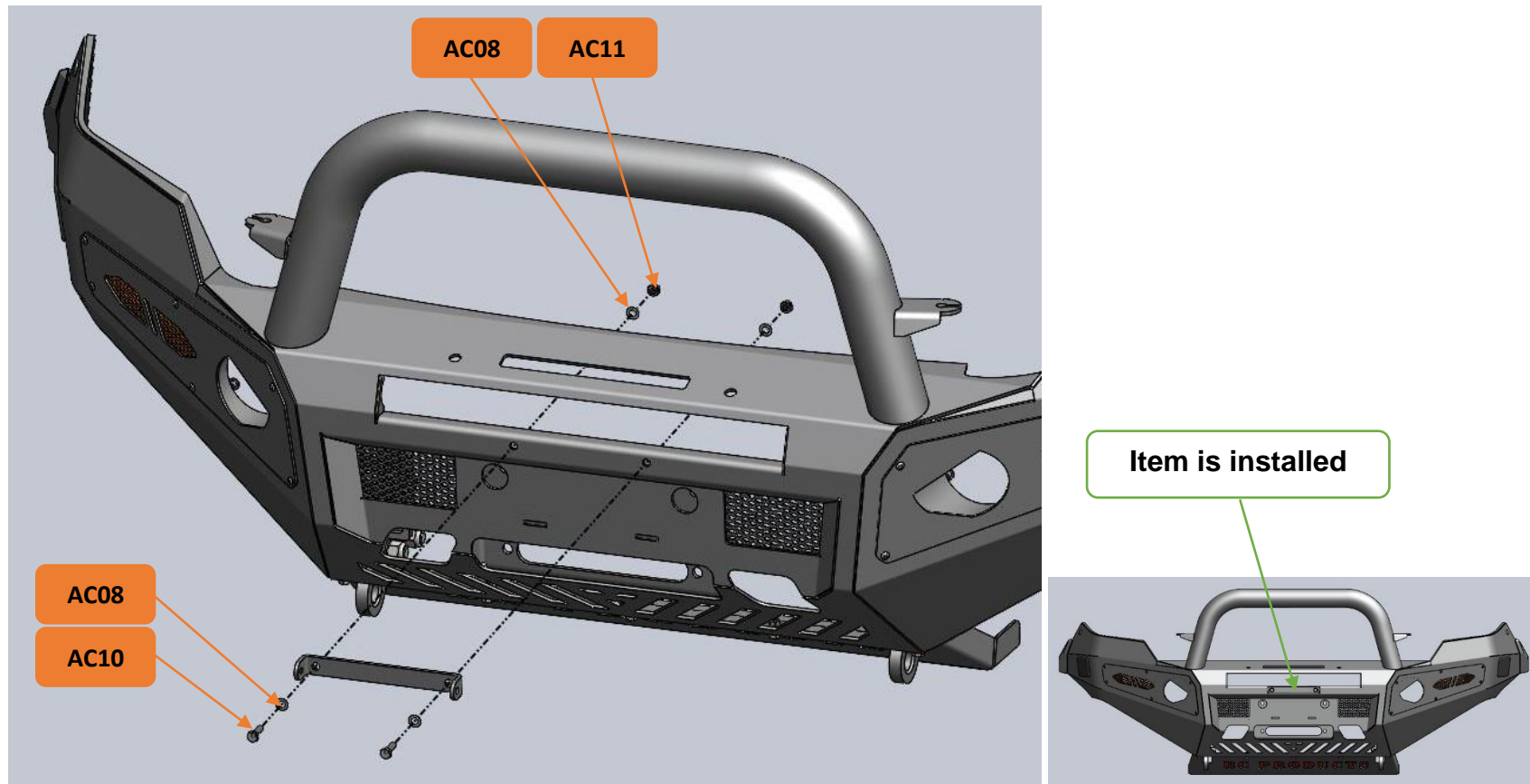


AC12 x 12 pcs : M6 x 12mmL x P1 Steel Hex socket (allen Key) & Domed Head Bolt

Bolt Tightening Torque: 10(Nm)

WI-010-R0

STEP 6.1: Install License Bracket into Bull Bar, bolted with 2 positions.



AC08 x 04 pcs : Steel Flat Washer M8 x 8.4mmID x 17mmOD x 2.5mmT

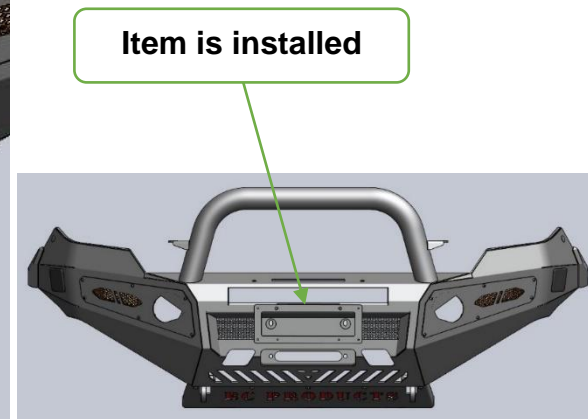
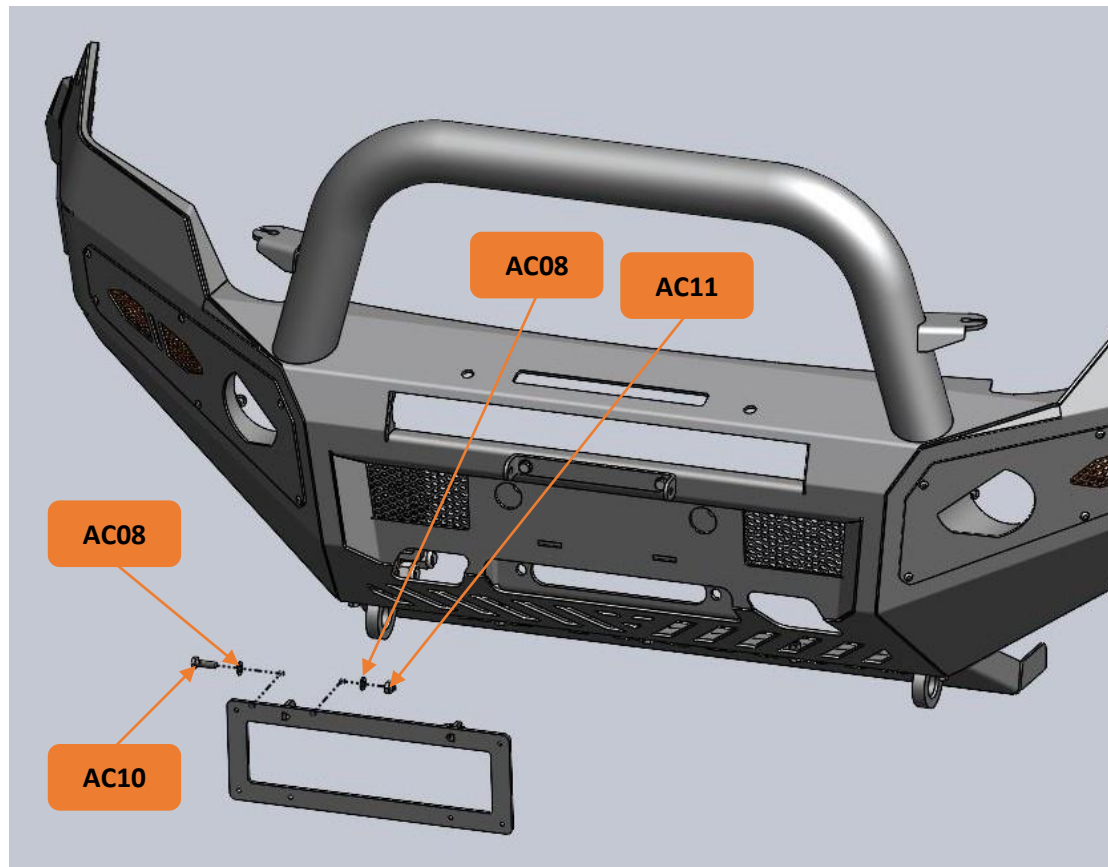
AC10 x 02 pcs : Hex Head Bolt M8 x 25mmL x P1.25

AC11 x 02 pcs : Nyloc Nut M8 x P1.25

Bolt Tightening Torque: 24(Nm)

WI-010-R0

STEP 6.2: Install License Plate Bracket, bolted with 2 positions.



AC08 x 04 pcs : Steel Flat Washer M8 x 8.4mmID x 17mmOD x 2.5mmT

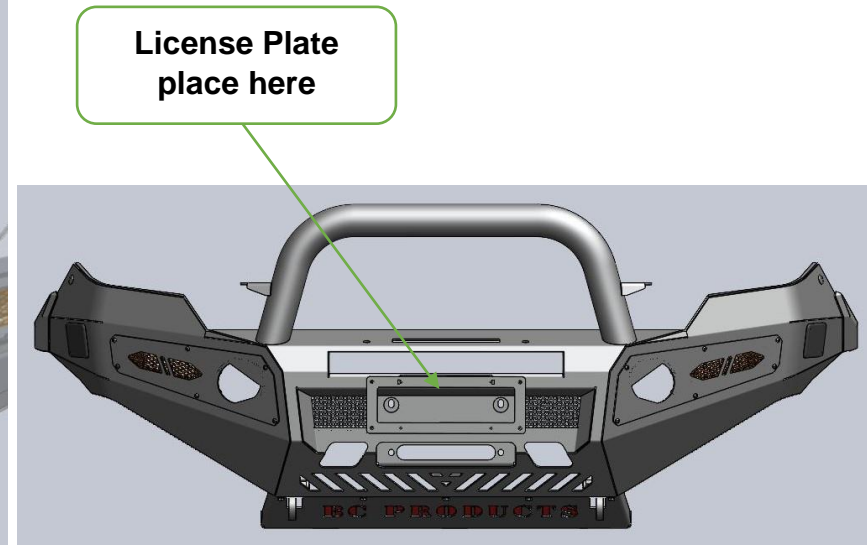
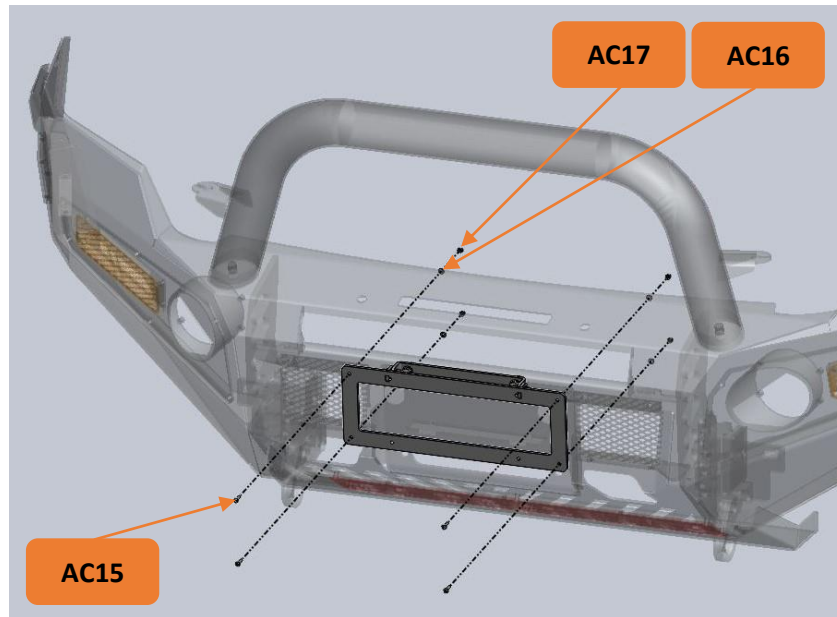
AC10 x 02 pcs : Hex Head Bolt M8 x 25mmL x P1.25

AC11 x 02 pcs : Nyloc Nut M8 x P1.25

Bolt Tightening Torque: 24(Nm)

WI-010-R0

STEP 6.3: Install License Plate into the Bracket, bolted with 4 positions.



AC15 x 04 pcs : M4 x 16mmL x P0.7 Hex socket (allen Key) & Domed Head Bolt

AC16 x 04 pcs : Steel Flat Washer M4 x 4.3mmID x 9mmOD x 0.8mmT

AC17 x 04 pcs : Nyloc Nut M4 x P0.7

Bolt Tightening Torque: 3(Nm)

Recommendation:

Due to the variation of vehicle chassis some shimming may be required by using the extra washers supplied (**AC04**) to assist in lining up the bar where required.

----- END -----